

SPECIFICATIONS



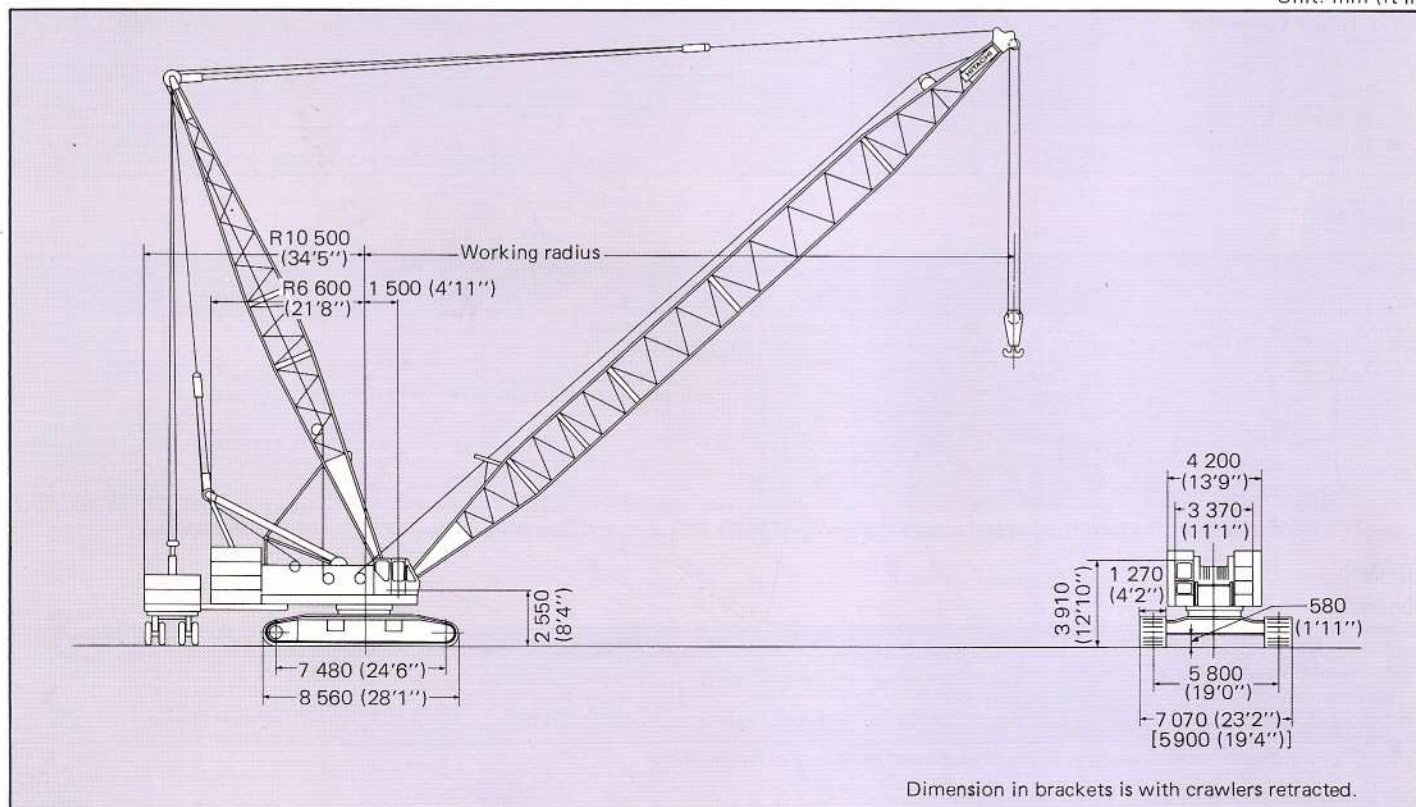
KH1000

COUNTERBALANCING HYDRAULIC CRAWLER CRANE

Max. Lifting Capacity: **Series 1** 130 000 kg (286 600 lb) at 10.0 m (32'10")
Series 2 180 000 kg (396 800 lb) at 8.1 m (26'7")

Dimensions

Unit: mm (ft in)



Specifications

| | | Series 1 | Series 2 |
|---------------------------|---|--|---|
| Maximum rated load | | 130 000 kg (286 600 lb) at 10.0 m (32'10") working radius | 180 000 kg (396 800 lb) at 8.1 m (26'7") working radius |
| Boom length | Heavy-duty service | 36.0 m (118'1") [with 24.0 m (78'9") mast (CB)] to 60.0 m (196'10") [with 30.0 m (98'5") mast (CB)] | |
| | Light-duty service | 39.0 m (127'11") [with 24.0 m (78'9") mast (CB)] to 99.0 m (324'10") [with 39.0 m (127'11") mast (CB)] | |
| Line speed* | Main (hook) hoist drum hoisting/lowering [Rope dia.: 28 mm (1.10")] | Extra high: 85 m/min (278.9 ft/min) High: 48 m/min (157.5 ft/min) Low: 24 m/min (78.7 ft/min) | |
| | Boom (Aux.) hoist drum hoisting/lowering [Rope dia.: 28 mm (1.10")] | High: 48 m/min (157.5 ft/min) Low: 24 m/min (78.7 ft/min) | |
| | Mast (CB) hoisting/lowering [Rope dia.: 22 mm (0.87")] | 20 m/min x 2 (65.6 ft/min x 2) | |
| Swing speed* | | 0 to 0.5 min ⁻¹ (0 to 0.5 rpm) | |
| Travel speed* | | 0 to 0.47 km/h (0 to 0.29 mph) | |
| Ground pressure | | 1.3 bar (1.3 kgf/cm ² , 18.49 psi) | |
| Operating weight | | 254 000 kg (560 000 lb) [Equipped with basic boom (Heavy-duty service), 200 000 kg (440 900 lb) capacity hook, 60 000 kg (132 000 lb) counterweight, and 70 000 kg (154 300 lb) tail weight (with carrier)] | 260 000 kg (573 200 lb) [Equipped with basic boom (Heavy-duty service), 200 000 kg (440 900 lb) capacity hook, 60 000 kg (132 000 lb) counterweight and 76 000 kg (167 600 lb) tail weight (with carrier)] |
| Engine | Model | ISUZU 12PB1 | |
| | Rated horsepower | 199 kW (270 PS) at 2 000 min ⁻¹ (2 000 rpm) | |
| Tail weight | | 70 000 kg (154 300 lb) (with carrier) | 76 000 kg (167 600 lb) (with carrier) |
| Tires | | 14.00-24-20PR [Double x 4] | |

*Vary according to the load.

COUNTERBALANCING

HOOKS

Series 1

| Capacity kg (lb) | Hook weight kg (lb) | Number of hoist reeving and maximum rated load kg (lb) | | | | | | | | | | | | |
|----------------------|------------------------|--|----------------------|----------------------|----------------------|---------------------|---------------------|---------------------|---------------------|---------------------|--------------------|--------------------|--|--|
| | | 11 | 10 | 9 | 8 | 7 | 6 | 5 | 4 | 3 | 2 | | | |
| 200 000 (440 900) | 3 500 (7 710) | 130 000 (286 600) | 125 000 (275 500) | 112 500 (248 000) | 100 000 (220 400) | 87 500 (192 900) | | | | | | | | |
| 100 000 (220 400) | 2 700 (5 950) | | | | 100 000 (220 400) | 87 500 (192 900) | 75 000 (165 300) | 62 500 (137 700) | 50 000 (110 200) | | | | | |
| 60 000 (132 200) | 2 100 (4 620) | | | | | | | | 60 000 (132 200) | 50 000 (110 200) | 37 500 (82 670) | 25 000 (55 110) | | |

Series 2

| Capacity kg (lb) | Hook weight kg (lb) | Number of hoist reeving and maximum rated load kg (lb) | | | | | | | | | | | | |
|----------------------|------------------------|--|----------------------|----------------------|----------------------|----------------------|----------------------|----------------------|---------------------|---------------------|---------------------|---------------------|--------------------|--------------------|
| | | 16 | 14 | 12 | 11 | 10 | 9 | 8 | 7 | 6 | 5 | 4 | 3 | 2 |
| 200 000 (440 900) | 3 500 (7 710) | 180 000 (396 800) | 170 000 (374 700) | 150 000 (330 600) | 137 500 (303 100) | 125 000 (275 500) | 112 500 (248 000) | 100 000 (220 400) | 87 500 (192 900) | | | | | |
| 100 000 (220 400) | 2 700 (5 950) | | | | | | | 100 000 (220 400) | 87 500 (192 900) | 75 000 (165 300) | 62 500 (137 700) | 50 000 (110 200) | | |
| 60 000 (132 200) | 2 100 (4 620) | | | | | | | | | | 60 000 (132 200) | 50 000 (110 200) | 37 500 (82 670) | 25 000 (55 110) |
| 25 000 (55 110) | 1 100 (2 420) | | | | | | | | | | | | | 25 000 (55 110) |

Note: This table applies for the factory equipped standard wire rope TS19 + 39 x 7 type C [Breaking strength 72.6×10^3 kg (160 000 lb)].

DRUMS

Dimensions

| | Rope dia. | Width | Drum p.c.d. | Max. rope capacity |
|------------------------|---------------|----------------|----------------|---|
| Main (hook) hoist drum | 28 mm (1.10") | 992 mm (39.1") | 624 mm (24.6") | 373 m (1 220') (5th layer) (in operation)* 760 m (2 490') (9th layer) (not in operation) |
| Boom (Aux.) hoist drum | 28 mm (1.10") | 992 mm (39.1") | 624 mm (24.6") | |

Note: *Determined by brake capacity, drum strength and resistance to miswindings.

Line speed and line pull

| | Max. line speed m/min (ft/min) | | | | Effective line pull | @ | Line speed | Max. running line pull | Max. starting line pull |
|------------------------|--------------------------------|------------|----------|------------|--|---|--------------------------|--|--|
| | Hoisting | | Lowering | | | | | | |
| Main (hook) hoist drum | E | 85 (278.9) | E | 85 (278.9) | 78 kN (8 000 kgf) (17 600 lbf) | @ | 75 m/min (246 ft/min) | 118 kN (12 000 kgf) (26 400 lbf) | 108 kN (11 000 kgf) (24 200 lbf) |
| | H | 48 (157.5) | H | 48 (157.5) | 177 kN (18 000 kgf) (39 680 lbf) | @ | 40 m/min (131 ft/min) | 245 kN (25 000 kgf) (55 110 lbf) | 225 kN (23 000 kgf) (50 700 lbf) |
| | L | 24 (78.7) | L | 24 (78.7) | | | | | |
| Boom (Aux.) hoist drum | H | 48 (157.5) | H | 48 (157.5) | 177 kN (18 000 kgf) (39 680 lbf) | @ | 40 m/min (131 ft/min) | 245 kN (25 000 kgf) (55 110 lbf) | 225 kN (23 000 kgf) (50 700 lbf) |
| | L | 24 (78.7) | L | 24 (78.7) | | | | | |

E: Extra high speed range (for light-duty service) H: High speed range L: Low speed range

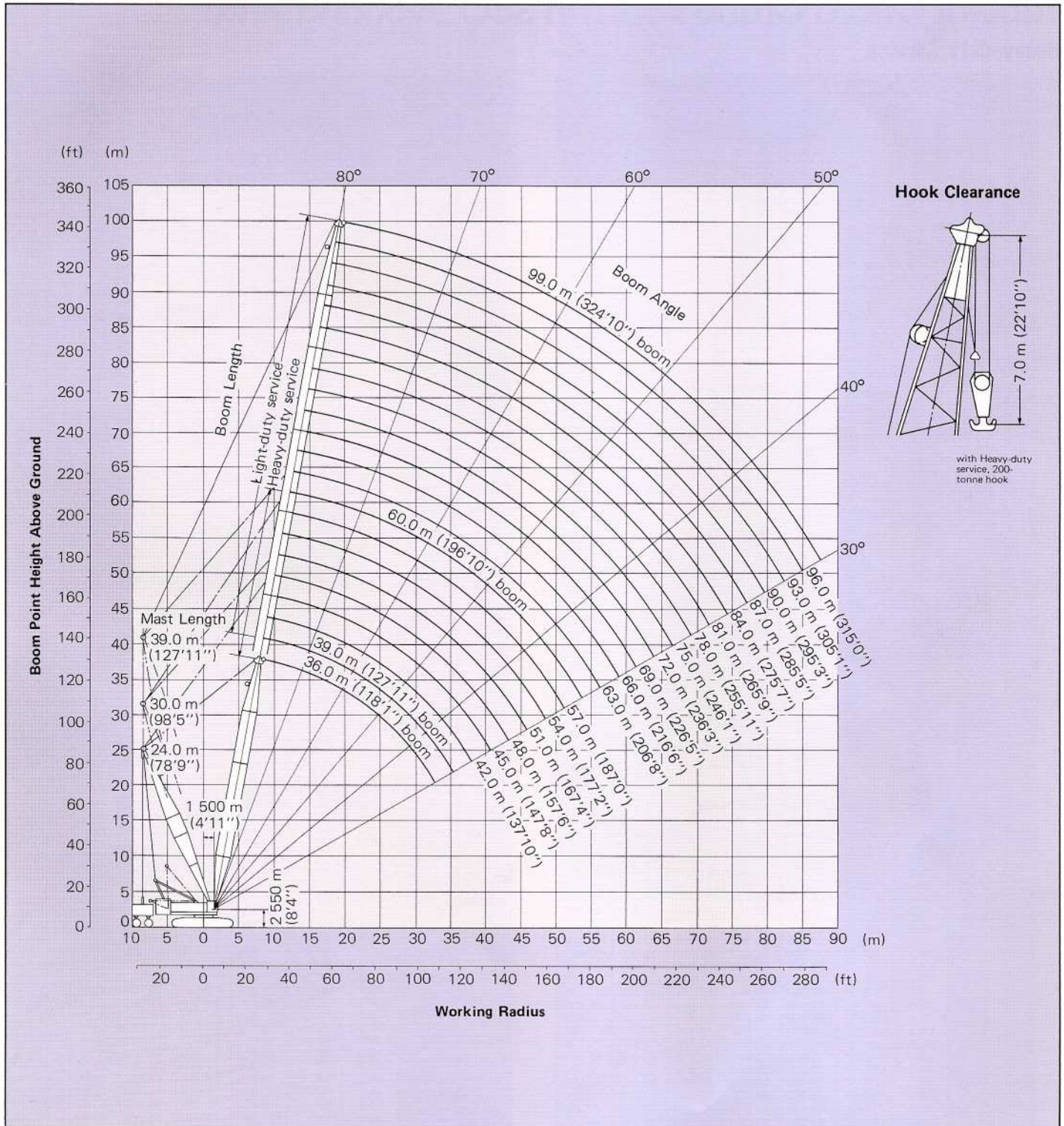
Notes:

- Line speed and line pull are based on first layer of winding at rated engine rpm.
- Hoisting line speed varies with load.
- Line pull is based on a single line pull in high speed range.
- Effective line pull is equivalent to available line pull of mechanical drive winch.

MAST (CB) HOIST DRUM (Twin Drum)

| Rope diameter | Hoisting line speed | Lowering line speed |
|---------------|----------------------------|----------------------------|
| 22 mm (0.72") | 20 m/min (65.5 ft/min) x 2 | 20 m/min (65.5 ft/min) x 2 |

Working Ranges



Crane Ratings

JIS Rating

The rated loads shown do not exceed 78% of tipping load when the machine is stationed on firm, level ground.

BS Rating

The rated loads are determined according to BS (British Standard: 1981) on the condition that the machine is stationed on firm, level ground.

PCSA Rating

The rated loads listed are determined according to PCSA (Power Crane and Shovel Association, U.S.A.) and do not exceed 75% of tipping load on condition that the machine is stationed on firm, level ground.

Series 1

Tubular Chord Crane Boom in 360° Working Area

Heavy-duty Service

| Mast (CB) length | Boom length | Working radius | | Rated load | | | | | |
|------------------|-------------------|----------------|---------|------------|---------|-----------|---------|-------------|----|
| | | | | JIS rating | | BS rating | | PCSA rating | |
| | | | | m | ft in | kg | kg | lb | kg |
| 24.0 (78'9") | 36.0 (118'1") | 8.1 | 26' 7" | 130 000 | 124 000 | 273 300 | 130 000 | 286 600 | |
| | | 9.0 | 29' 6" | 130 000 | 124 000 | 273 300 | 130 000 | 286 600 | |
| | | 10.0 | 32' 10" | 130 000 | 124 000 | 273 300 | 130 000 | 286 600 | |
| | | 12.0 | 39' 4" | 110 000 | 110 000 | 242 500 | 110 000 | 242 500 | |
| | | 14.0 | 45' 11" | 89 000 | 89 000 | 196 200 | 89 000 | 196 200 | |
| | | 16.0 | 52' 6" | 74 500 | 74 500 | 164 200 | 74 500 | 164 200 | |
| | | 18.0 | 59' 1" | 63 900 | 63 900 | 140 800 | 63 900 | 140 800 | |
| | | 20.0 | 65' 7" | 55 700 | 55 700 | 122 700 | 55 700 | 122 700 | |
| | | 22.0 | 72' 2" | 49 400 | 49 400 | 108 900 | 49 400 | 108 900 | |
| | | 24.0 | 78' 9" | 44 200 | 44 200 | 97 440 | 44 200 | 97 440 | |
| | | 26.0 | 85' 4" | 40 000 | 40 000 | 88 180 | 40 000 | 88 180 | |
| | | 28.0 | 91' 10" | 36 500 | 36 500 | 80 460 | 36 500 | 80 460 | |
| | 30.0 | 98' 5" | 33 500 | 33 500 | 73 850 | 33 500 | 73 850 | | |
| | 32.0 | 105' 0" | 31 000 | 31 000 | 68 340 | 31 000 | 68 340 | | |
| | 39.0 (127'11") | 9.0 | 29' 6" | 122 300 | 110 000 | 242 500 | 122 300 | 269 600 | |
| | | 10.0 | 32' 10" | 121 800 | 110 000 | 242 500 | 121 800 | 268 500 | |
| | | 12.0 | 39' 4" | 109 700 | 109 700 | 241 800 | 109 700 | 241 800 | |
| | | 14.0 | 45' 11" | 88 700 | 88 700 | 195 500 | 88 700 | 195 500 | |
| | | 16.0 | 52' 6" | 74 200 | 74 200 | 163 500 | 74 200 | 163 500 | |
| | | 18.0 | 59' 1" | 63 500 | 63 500 | 139 900 | 63 500 | 139 900 | |
| | | 20.0 | 65' 7" | 55 400 | 55 400 | 122 100 | 55 400 | 122 100 | |
| | | 22.0 | 72' 2" | 49 000 | 49 000 | 108 000 | 49 000 | 108 000 | |
| | | 24.0 | 78' 9" | 43 900 | 43 900 | 96 780 | 43 900 | 96 780 | |
| | | 26.0 | 85' 4" | 39 600 | 39 600 | 87 300 | 39 600 | 87 300 | |
| | | 28.0 | 91' 10" | 36 100 | 36 100 | 79 580 | 36 100 | 79 580 | |
| | | 30.0 | 98' 5" | 33 100 | 33 100 | 72 970 | 33 100 | 72 970 | |
| | 32.0 | 105' 0" | 30 500 | 30 500 | 67 240 | 30 500 | 67 230 | | |
| | 34.0 | 111' 7" | 28 400 | 28 400 | 62 610 | 28 400 | 62 610 | | |
| | 42.0 (137'10") | 10.0 | 32' 10" | 107 700 | 100 000 | 220 400 | 107 700 | 237 400 | |
| | | 12.0 | 39' 4" | 106 800 | 100 000 | 220 400 | 106 800 | 235 400 | |
| | | 14.0 | 45' 11" | 88 600 | 88 600 | 195 300 | 88 600 | 195 300 | |
| | | 16.0 | 52' 6" | 74 100 | 74 100 | 163 300 | 74 100 | 163 300 | |
| | | 18.0 | 59' 1" | 63 500 | 63 500 | 139 900 | 63 500 | 139 900 | |
| | | 20.0 | 65' 7" | 55 300 | 55 300 | 121 900 | 55 300 | 121 900 | |
| | | 22.0 | 72' 2" | 48 900 | 48 900 | 107 800 | 48 900 | 107 800 | |
| | | 24.0 | 78' 9" | 43 800 | 43 800 | 96 560 | 43 800 | 96 560 | |
| | | 26.0 | 85' 4" | 39 500 | 39 500 | 87 080 | 39 500 | 87 080 | |
| | | 28.0 | 91' 10" | 35 900 | 35 900 | 79 140 | 35 900 | 79 140 | |
| | | 30.0 | 98' 5" | 32 900 | 32 900 | 72 530 | 32 900 | 72 530 | |
| | | 32.0 | 105' 0" | 30 300 | 30 300 | 66 800 | 30 300 | 66 790 | |
| | 34.0 | 111' 7" | 28 100 | 28 100 | 61 940 | 28 100 | 61 940 | | |
| | 36.0 | 118' 1" | 26 200 | 26 200 | 57 760 | 26 200 | 57 760 | | |
| | 38.0 | 124' 8" | 24 500 | 24 500 | 54 010 | 24 500 | 54 010 | | |
| | 45.0 (147'8") | 10.0 | 32' 10" | 97 700 | 89 400 | 197 000 | 97 700 | 215 300 | |
| | | 12.0 | 39' 4" | 96 700 | 89 400 | 197 000 | 96 700 | 213 100 | |
| | | 14.0 | 45' 11" | 88 500 | 88 500 | 195 100 | 88 500 | 195 100 | |
| | | 16.0 | 52' 6" | 74 000 | 74 000 | 163 100 | 74 000 | 163 100 | |
| | | 18.0 | 59' 1" | 63 300 | 63 300 | 139 500 | 63 300 | 139 500 | |
| 20.0 | | 65' 7" | 55 200 | 55 200 | 121 600 | 55 200 | 121 600 | | |
| 22.0 | | 72' 2" | 48 800 | 48 800 | 107 500 | 48 800 | 107 500 | | |
| 24.0 | | 78' 9" | 43 600 | 43 600 | 96 120 | 43 600 | 96 110 | | |
| 26.0 | | 85' 4" | 39 300 | 39 300 | 86 640 | 39 300 | 86 640 | | |
| 28.0 | | 91' 10" | 35 800 | 35 800 | 78 920 | 35 800 | 78 920 | | |
| 30.0 | | 98' 5" | 32 700 | 32 700 | 72 090 | 32 700 | 72 080 | | |
| 32.0 | | 105' 0" | 30 100 | 30 100 | 66 350 | 30 100 | 66 350 | | |
| 34.0 | 111' 7" | 27 900 | 27 900 | 61 500 | 27 900 | 61 500 | | | |
| 36.0 | 118' 1" | 25 900 | 25 900 | 57 090 | 25 900 | 57 090 | | | |
| 38.0 | 124' 8" | 24 200 | 24 200 | 53 350 | 24 200 | 53 350 | | | |
| 40.0 | 131' 3" | 22 700 | 22 700 | 50 040 | 22 700 | 50 040 | | | |
| 48.0 (157'6") | 12.0 | 39' 4" | 87 500 | 80 300 | 177 000 | 87 500 | 192 900 | | |
| | 14.0 | 45' 11" | 87 000 | 80 300 | 177 000 | 87 000 | 191 700 | | |
| | 16.0 | 52' 6" | 73 900 | 73 900 | 162 900 | 73 900 | 162 900 | | |
| | 18.0 | 59' 1" | 63 200 | 63 200 | 139 300 | 63 200 | 139 300 | | |
| | 20.0 | 65' 7" | 55 000 | 55 000 | 121 200 | 55 000 | 121 200 | | |
| | 22.0 | 72' 2" | 48 600 | 48 600 | 107 100 | 48 600 | 107 100 | | |
| | 24.0 | 78' 9" | 43 400 | 43 400 | 95 680 | 43 400 | 95 670 | | |
| | 26.0 | 85' 4" | 39 200 | 39 200 | 86 420 | 39 200 | 86 410 | | |
| | 28.0 | 91' 10" | 35 600 | 35 600 | 78 480 | 35 600 | 78 480 | | |
| | 30.0 | 98' 5" | 32 500 | 32 500 | 71 650 | 32 500 | 71 640 | | |
| | 32.0 | 105' 0" | 29 900 | 29 900 | 65 910 | 29 900 | 65 910 | | |
| | 34.0 | 111' 7" | 27 600 | 27 600 | 60 840 | 27 600 | 60 840 | | |
| 36.0 | 118' 1" | 25 700 | 25 700 | 56 650 | 25 700 | 56 650 | | | |
| 38.0 | 124' 8" | 23 900 | 23 900 | 52 680 | 23 900 | 52 680 | | | |
| 40.0 | 131' 3" | 22 400 | 22 400 | 49 380 | 22 400 | 49 380 | | | |
| 42.0 | 137' 10" | 21 000 | 21 000 | 46 290 | 21 000 | 46 290 | | | |

| Mast (CB) length | Boom length | Working radius | | Rated load | | | | | |
|------------------|------------------|----------------|---------|------------|--------|-----------|--------|-------------|----|
| | | | | JIS rating | | BS rating | | PCSA rating | |
| | | | | m | ft in | kg | kg | lb | kg |
| 30.0 (98'5") | 51.0 (167'4") | 12.0 | 39' 4" | 85 800 | 77 000 | 169 700 | 85 800 | 189 100 | |
| | | 14.0 | 45' 11" | 85 800 | 77 000 | 169 700 | 85 800 | 189 100 | |
| | | 16.0 | 52' 6" | 74 100 | 74 100 | 163 300 | 74 100 | 163 300 | |
| | | 18.0 | 59' 1" | 63 400 | 63 400 | 139 700 | 63 400 | 139 700 | |
| | | 20.0 | 65' 7" | 55 200 | 55 200 | 121 600 | 55 200 | 121 600 | |
| | | 22.0 | 72' 2" | 48 700 | 48 700 | 107 300 | 48 700 | 107 300 | |
| | | 24.0 | 78' 9" | 43 500 | 43 500 | 95 900 | 43 500 | 95 890 | |
| | | 26.0 | 85' 4" | 39 200 | 39 200 | 86 420 | 39 200 | 86 410 | |
| | | 28.0 | 91' 10" | 35 600 | 35 600 | 78 480 | 35 600 | 78 480 | |
| | | 30.0 | 98' 5" | 32 500 | 32 500 | 71 650 | 32 500 | 76 050 | |
| | | 32.0 | 105' 0" | 29 900 | 29 900 | 65 910 | 29 900 | 65 910 | |
| | | 34.0 | 111' 7" | 27 600 | 27 600 | 60 840 | 27 600 | 60 840 | |
| | 36.0 | 118' 1" | 25 600 | 25 600 | 56 430 | 25 600 | 56 430 | | |
| | 38.0 | 124' 8" | 23 800 | 23 800 | 52 470 | 23 800 | 52 460 | | |
| | 40.0 | 131' 3" | 22 300 | 22 300 | 49 160 | 22 300 | 49 160 | | |
| | 42.0 | 137' 10" | 20 900 | 20 900 | 46 070 | 20 900 | 46 070 | | |
| | 44.0 | 144' 4" | 19 700 | 19 700 | 43 430 | 19 700 | 43 430 | | |
| | 54.0 (177'2") | 12.0 | 39' 4" | 78 000 | 69 000 | 152 100 | 78 000 | 171 900 | |
| | | 14.0 | 45' 11" | 78 000 | 69 000 | 152 100 | 78 000 | 171 900 | |
| | | 16.0 | 52' 6" | 74 000 | 69 000 | 152 100 | 74 000 | 163 100 | |
| | | 18.0 | 59' 1" | 63 200 | 63 200 | 139 300 | 63 200 | 139 300 | |
| | | 20.0 | 65' 7" | 55 000 | 55 000 | 121 200 | 55 000 | 121 200 | |
| | | 22.0 | 72' 2" | 48 500 | 48 500 | 106 900 | 48 500 | 106 900 | |
| | | 24.0 | 78' 9" | 43 300 | 43 300 | 95 460 | 43 300 | 95 450 | |
| | | 26.0 | 85' 4" | 39 000 | 39 000 | 85 980 | 39 000 | 85 970 | |
| | | 28.0 | 91' 10" | 35 400 | 35 400 | 78 040 | 35 400 | 78 040 | |
| | | 30.0 | 98' 5" | 32 300 | 32 300 | 71 200 | 32 300 | 71 200 | |
| | | 32.0 | 105' 0" | 29 600 | 29 600 | 65 250 | 29 600 | 65 250 | |
| | | 34.0 | 111' 7" | 27 300 | 27 300 | 60 180 | 27 300 | 60 180 | |
| | 36.0 | 118' 1" | 25 300 | 25 300 | 55 770 | 25 300 | 55 770 | | |
| | 38.0 | 124' 8" | 23 600 | 23 600 | 52 020 | 23 600 | 52 020 | | |
| | 40.0 | 131' 3" | 22 000 | 22 000 | 48 500 | 22 000 | 48 500 | | |
| | 42.0 | 137' 10" | 20 600 | 20 600 | 45 410 | 20 600 | 45 410 | | |
| | 44.0 | 144' 4" | 19 400 | 19 400 | 42 760 | 19 400 | 42 760 | | |
| | 46.0 | 150' 11" | 18 200 | 18 200 | 40 120 | 18 200 | 40 120 | | |
| | 48.0 | 157' 6" | 17 300 | 17 300 | 38 140 | 17 300 | 38 130 | | |
| | 57.0 (187'0") | 12.0 | 39' 4" | 68 900 | 61 600 | 135 800 | 68 900 | 151 800 | |
| | | 14.0 | 45' 11" | 68 900 | 61 600 | 135 800 | 68 900 | 151 800 | |
| | | 16.0 | 52' 6" | 68 900 | 61 600 | 135 800 | 68 900 | 151 800 | |
| | | 18.0 | 59' 1" | 63 100 | 61 600 | 135 800 | 63 100 | 139 100 | |
| | | 20.0 | 65' 7" | 54 900 | 54 900 | 121 000 | 54 900 | 121 000 | |
| | | 22.0 | 72' 2" | 48 400 | 48 400 | 106 700 | 48 400 | 106 700 | |
| | | 24.0 | 78' 9" | 43 200 | 43 200 | 95 230 | 43 200 | 95 230 | |
| | | 26.0 | 85' 4" | 38 800 | 38 800 | 85 530 | 38 800 | 85 530 | |
| | | 28.0 | 91' 10" | 35 200 | 35 200 | 77 600 | 35 200 | 77 600 | |
| | | 30.0 | 98' 5" | 32 100 | 32 100 | 70 760 | 32 100 | 70 760 | |
| | | 32.0 | 105' 0" | 29 500 | 29 500 | 65 030 | 29 500 | 65 030 | |
| | | 34.0 | 111' 7" | 27 200 | 27 200 | 59 960 | 27 200 | 59 960 | |
| 36.0 | 118' 1" | 25 200 | 25 200 | 55 550 | 25 200 | 55 550 | | | |
| 38.0 | 124' 8" | 23 400 | 23 400 | 51 580 | 23 400 | 51 580 | | | |
| 40.0 | 131' 3" | 21 800 | 21 800 | 48 060 | | | | | |

Light-duty Service

| Mast (CB) length | Boom length | Working radius | | Rated load | | | | | | |
|------------------|-------------------|----------------|---------|------------|---------|-----------|---------|-------------|---------|---------|
| | | | | JIS rating | | BS rating | | PCSA rating | | |
| | | | | m | ft in | kg | kg | lb | kg | lb |
| 24.0 (78'9") | 39.0 (127'11") | 9.0 | 29' 6" | 100 000 | 100 000 | 220 400 | 100 000 | 220 400 | 100 000 | 220 400 |
| | | 10.0 | 32'10" | 100 000 | 100 000 | 220 400 | 100 000 | 220 400 | 100 000 | 220 400 |
| | | 12.0 | 39' 4" | 100 000 | 100 000 | 220 400 | 100 000 | 220 400 | 100 000 | 220 400 |
| | | 14.0 | 45'11" | 90 200 | 90 200 | 198 800 | 90 200 | 198 800 | 90 200 | 198 800 |
| | | 16.0 | 52' 6" | 75 600 | 75 600 | 166 600 | 75 600 | 166 600 | 75 600 | 166 600 |
| | | 18.0 | 59' 1" | 65 000 | 65 000 | 143 200 | 65 000 | 143 200 | 65 000 | 143 200 |
| | | 20.0 | 65' 7" | 56 800 | 56 800 | 125 200 | 56 800 | 125 200 | 56 800 | 125 200 |
| | | 22.0 | 72' 2" | 50 400 | 50 400 | 111 100 | 50 400 | 111 100 | 50 400 | 111 100 |
| | | 24.0 | 78' 9" | 45 200 | 45 200 | 99 640 | 45 200 | 99 640 | 45 200 | 99 640 |
| | | 26.0 | 85' 4" | 41 000 | 41 000 | 90 380 | 41 000 | 90 380 | 41 000 | 90 380 |
| | | 28.0 | 91'10" | 37 400 | 37 400 | 82 450 | 37 400 | 82 450 | 37 400 | 82 450 |
| | | 30.0 | 98' 5" | 34 300 | 34 300 | 75 610 | 34 300 | 75 610 | 34 300 | 75 610 |
| 32.0 | 105' 0" | 31 700 | 31 700 | 69 880 | 31 700 | 69 880 | 31 700 | 69 880 | | |
| 34.0 | 111' 7" | 29 500 | 29 500 | 65 030 | 29 500 | 65 030 | 29 500 | 65 030 | | |
| 24.0 (78'9") | 42.0 (137'10") | 10.0 | 32'10" | 100 000 | 100 000 | 220 400 | 100 000 | 220 400 | 100 000 | 220 400 |
| | | 12.0 | 39' 4" | 100 000 | 100 000 | 220 400 | 100 000 | 220 400 | 100 000 | 220 400 |
| | | 14.0 | 45'11" | 89 900 | 89 900 | 198 100 | 89 900 | 198 100 | 89 900 | 198 100 |
| | | 16.0 | 52' 6" | 75 400 | 75 400 | 166 200 | 75 400 | 166 200 | 75 400 | 166 200 |
| | | 18.0 | 59' 1" | 64 700 | 64 700 | 142 600 | 64 700 | 142 600 | 64 700 | 142 600 |
| | | 20.0 | 65' 7" | 56 600 | 56 600 | 124 700 | 56 600 | 124 700 | 56 600 | 124 700 |
| | | 22.0 | 72' 2" | 50 200 | 50 200 | 110 600 | 50 200 | 110 600 | 50 200 | 110 600 |
| | | 24.0 | 78' 9" | 45 000 | 45 000 | 99 200 | 45 000 | 99 200 | 45 000 | 99 200 |
| | | 26.0 | 85' 4" | 40 700 | 40 700 | 89 720 | 40 700 | 89 720 | 40 700 | 89 720 |
| | | 28.0 | 91'10" | 37 100 | 37 100 | 81 790 | 37 100 | 81 790 | 37 100 | 81 790 |
| | | 30.0 | 98' 5" | 34 100 | 34 100 | 75 170 | 34 100 | 75 170 | 34 100 | 75 170 |
| | | 32.0 | 105' 0" | 31 500 | 31 500 | 69 440 | 31 500 | 69 440 | 31 500 | 69 440 |
| 34.0 | 111' 7" | 29 200 | 29 200 | 64 370 | 29 200 | 64 370 | 29 200 | 64 370 | | |
| 36.0 | 118' 1" | 27 200 | 27 200 | 59 960 | 27 200 | 59 960 | 27 200 | 59 960 | | |
| 38.0 | 124' 8" | 25 500 | 25 500 | 56 210 | 25 500 | 56 210 | 25 500 | 56 210 | | |
| 24.0 (78'9") | 45.0 (147'8") | 10.0 | 32'10" | 96 700 | 90 000 | 198 400 | 96 700 | 213 100 | 96 700 | 213 100 |
| | | 12.0 | 39' 4" | 96 100 | 90 000 | 198 400 | 96 100 | 211 800 | 96 100 | 211 800 |
| | | 14.0 | 45'11" | 89 700 | 89 700 | 197 700 | 89 700 | 197 700 | 89 700 | 197 700 |
| | | 16.0 | 52' 6" | 75 200 | 75 200 | 165 700 | 75 200 | 165 700 | 75 200 | 165 700 |
| | | 18.0 | 59' 1" | 64 500 | 64 500 | 142 100 | 64 500 | 142 100 | 64 500 | 142 100 |
| | | 20.0 | 65' 7" | 56 400 | 56 400 | 124 300 | 56 400 | 124 300 | 56 400 | 124 300 |
| | | 22.0 | 72' 2" | 50 000 | 50 000 | 110 200 | 50 000 | 110 200 | 50 000 | 110 200 |
| | | 24.0 | 78' 9" | 44 800 | 44 800 | 98 760 | 44 800 | 98 760 | 44 800 | 98 760 |
| | | 26.0 | 85' 4" | 40 500 | 40 500 | 89 280 | 40 500 | 89 280 | 40 500 | 89 280 |
| | | 28.0 | 91'10" | 36 900 | 36 900 | 81 340 | 36 900 | 81 340 | 36 900 | 81 340 |
| | | 30.0 | 98' 5" | 33 800 | 33 800 | 74 510 | 33 800 | 74 510 | 33 800 | 74 510 |
| | | 32.0 | 105' 0" | 31 200 | 31 200 | 68 780 | 31 200 | 68 780 | 31 200 | 68 780 |
| 34.0 | 111' 7" | 28 900 | 28 900 | 63 710 | 28 900 | 63 710 | 28 900 | 63 710 | | |
| 36.0 | 118' 1" | 27 000 | 27 000 | 59 520 | 27 000 | 59 520 | 27 000 | 59 520 | | |
| 38.0 | 124' 8" | 25 200 | 25 200 | 55 550 | 25 200 | 55 550 | 25 200 | 55 550 | | |
| 40.0 | 131' 3" | 23 700 | 23 700 | 52 240 | 23 700 | 52 240 | 23 700 | 52 240 | | |
| 30.0 (98'5") | 48.0 (157'6") | 12.0 | 39' 4" | 88 400 | 81 800 | 180 300 | 88 400 | 194 800 | 88 400 | 194 800 |
| | | 14.0 | 45'11" | 87 800 | 81 800 | 180 300 | 87 800 | 193 500 | 87 800 | 193 500 |
| | | 16.0 | 52' 6" | 75 100 | 75 100 | 165 500 | 75 100 | 165 500 | 75 100 | 165 500 |
| | | 18.0 | 59' 1" | 64 400 | 64 400 | 141 900 | 64 400 | 141 900 | 64 400 | 141 900 |
| | | 20.0 | 65' 7" | 56 300 | 56 300 | 124 100 | 56 300 | 124 100 | 56 300 | 124 100 |
| | | 22.0 | 72' 2" | 49 800 | 49 800 | 109 700 | 49 800 | 109 700 | 49 800 | 109 700 |
| | | 24.0 | 78' 9" | 44 600 | 44 600 | 98 320 | 44 600 | 98 320 | 44 600 | 98 320 |
| | | 26.0 | 85' 4" | 40 300 | 40 300 | 88 840 | 40 300 | 88 840 | 40 300 | 88 840 |
| | | 28.0 | 91'10" | 36 700 | 36 700 | 80 900 | 36 700 | 80 900 | 36 700 | 80 900 |
| | | 30.0 | 98' 5" | 33 700 | 33 700 | 74 290 | 33 700 | 74 290 | 33 700 | 74 290 |
| | | 32.0 | 105' 0" | 31 100 | 31 100 | 68 560 | 31 100 | 68 560 | 31 100 | 68 560 |
| | | 34.0 | 111' 7" | 28 800 | 28 800 | 63 490 | 28 800 | 63 490 | 28 800 | 63 490 |
| 36.0 | 118' 1" | 26 800 | 26 800 | 59 080 | 26 800 | 59 080 | 26 800 | 59 080 | | |
| 38.0 | 124' 8" | 25 000 | 25 000 | 55 110 | 25 000 | 55 110 | 25 000 | 55 110 | | |
| 40.0 | 131' 3" | 23 500 | 23 500 | 51 800 | 23 500 | 51 800 | 23 500 | 51 800 | | |
| 42.0 | 137'10" | 22 100 | 22 100 | 48 720 | 22 100 | 48 720 | 22 100 | 48 720 | | |
| 30.0 (98'5") | 51.0 (167'4") | 12.0 | 39' 4" | 85 500 | 78 000 | 171 900 | 85 500 | 188 400 | 85 500 | 188 400 |
| | | 14.0 | 45'11" | 85 500 | 78 000 | 171 900 | 85 500 | 188 400 | 85 500 | 188 400 |
| | | 16.0 | 52' 6" | 75 400 | 75 400 | 166 200 | 75 400 | 166 200 | 75 400 | 166 200 |
| | | 18.0 | 59' 1" | 64 700 | 64 700 | 142 600 | 64 700 | 142 600 | 64 700 | 142 600 |
| | | 20.0 | 65' 7" | 56 400 | 56 400 | 124 300 | 56 400 | 124 300 | 56 400 | 124 300 |
| | | 22.0 | 72' 2" | 50 000 | 50 000 | 110 200 | 50 000 | 110 200 | 50 000 | 110 200 |
| | | 24.0 | 78' 9" | 44 700 | 44 700 | 98 540 | 44 700 | 98 540 | 44 700 | 98 540 |
| | | 26.0 | 85' 4" | 40 400 | 40 400 | 89 060 | 40 400 | 89 060 | 40 400 | 89 060 |
| | | 28.0 | 91'10" | 36 800 | 36 800 | 81 120 | 36 800 | 81 120 | 36 800 | 81 120 |
| | | 30.0 | 98' 5" | 33 700 | 33 700 | 74 290 | 33 700 | 74 290 | 33 700 | 74 290 |
| | | 32.0 | 105' 0" | 31 100 | 31 100 | 68 560 | 31 100 | 68 560 | 31 100 | 68 560 |
| | | 34.0 | 111' 7" | 28 800 | 28 800 | 63 490 | 28 800 | 63 490 | 28 800 | 63 490 |
| 36.0 | 118' 1" | 26 700 | 26 700 | 58 860 | 26 700 | 58 860 | 26 700 | 58 860 | | |
| 38.0 | 124' 8" | 25 000 | 25 000 | 55 110 | 25 000 | 55 110 | 25 000 | 55 110 | | |
| 40.0 | 131' 3" | 23 400 | 23 400 | 51 580 | 23 400 | 51 580 | 23 400 | 51 580 | | |
| 42.0 | 137'10" | 22 000 | 22 000 | 48 500 | 22 000 | 48 500 | 22 000 | 48 500 | | |
| 44.0 | 144' 4" | 20 800 | 20 800 | 45 850 | 20 800 | 45 850 | 20 800 | 45 850 | | |
| 30.0 (98'5") | 54.0 (177'2") | 12.0 | 39' 4" | 77 700 | 70 000 | 154 300 | 77 700 | 171 200 | 77 700 | 171 200 |
| | | 14.0 | 45'11" | 77 700 | 70 000 | 154 300 | 77 700 | 171 200 | 77 700 | 171 200 |
| | | 16.0 | 52' 6" | 75 200 | 70 000 | 154 300 | 75 200 | 165 700 | 75 200 | 165 700 |
| | | 18.0 | 59' 1" | 64 400 | 64 400 | 141 900 | 64 400 | 141 900 | 64 400 | 141 900 |
| | | 20.0 | 65' 7" | 56 200 | 56 200 | 123 800 | 56 200 | 123 800 | 56 200 | 123 800 |
| | | 22.0 | 72' 2" | 49 700 | 49 700 | 109 500 | 49 700 | 109 500 | 49 700 | 109 500 |
| | | 24.0 | 78' 9" | 44 500 | 44 500 | 98 100 | 44 500 | 98 100 | 44 500 | 98 100 |
| | | 26.0 | 85' 4" | 40 200 | 40 200 | 88 620 | 40 200 | 88 620 | 40 200 | 88 620 |
| | | 28.0 | 91'10" | 36 500 | 36 500 | 80 460 | 36 500 | 80 460 | 36 500 | 80 460 |
| | | 30.0 | 98' 5" | 33 400 | 33 400 | 73 630 | 33 400 | 73 630 | 33 400 | 73 630 |
| | | 32.0 | 105' 0" | 30 800 | 30 800 | 67 900 | 30 800 | 67 900 | 30 800 | 67 900 |
| | | 34.0 | 111' 7" | 28 500 | 28 500 | 62 830 | 28 500 | 62 830 | 28 500 | 62 830 |
| 36.0 | 118' 1" | 26 500 | 26 500 | 58 420 | 26 500 | 58 420 | 26 500 | 58 420 | | |
| 38.0 | 124' 8" | 24 700 | 24 700 | 54 450 | 24 700 | 54 450 | 24 700 | 54 450 | | |
| 40.0 | 131' 3" | 23 100 | 23 100 | 50 920 | 23 100 | 50 920 | 23 100 | 50 920 | | |
| 42.0 | 137'10" | 21 700 | 21 700 | 47 830 | 21 700 | 47 830 | 21 700 | 47 830 | | |
| 44.0 | 144' 4" | 20 500 | 20 500 | 45 190 | 20 500 | 45 190 | 20 500 | 45 190 | | |
| 46.0 | 150'11" | 19 300 | 19 300 | 42 540 | 19 300 | 42 540 | 19 300 | 42 540 | | |
| 48.0 | 157' 6" | 18 300 | 18 300 | 40 340 | 18 300 | 40 340 | 18 300 | 40 340 | | |

| Mast (CB) length | Boom length | Working radius | | Rated load | | | | | | |
|------------------|------------------|----------------|--------|------------|--------|-----------|--------|-------------|--------|---------|
| | | | | JIS rating | | BS rating | | PCSA rating | | |
| | | | | m | ft in | kg | kg | lb | kg | lb |
| 30.0 (98'5") | 57.0 (187'0") | 12.0 | 39' 4" | 68 800 | 62 500 | 137 700 | 68 800 | 151 600 | 68 800 | 151 600 |
| | | 14.0 | 45'11" | 68 800 | 62 500 | 137 700 | 68 800 | 151 600 | 68 800 | 151 600 |
| | | 16.0 | 52' 6" | 68 800 | 62 500 | 137 700 | 68 800 | 151 600 | 68 800 | 151 600 |
| | | 18.0 | 59' 1" | 64 200 | 62 500 | 137 700 | 64 200 | 141 500 | 64 200 | 141 500 |
| | | 20.0 | 65' 7" | 56 000 | 56 000 | 123 400 | 56 000 | 123 400 | 56 000 | 123 400 |
| | | | | | | | | | | |

| Mast (CB) length | Boom length | Working radius | | Rated load | | | | | |
|------------------------|------------------|-------------------|----------|------------|--------|-----------|--------|-------------|----|
| | | | | JIS rating | | BS rating | | PCSA rating | |
| | | | | m | ft in | kg | kg | lb | kg |
| 69.0 (226'5") | | 14.0 | 45' 11" | 50 000 | 45 500 | 100 300 | 50 000 | 110 200 | |
| | | 16.0 | 52' 6" | 50 000 | 45 500 | 100 300 | 50 000 | 110 200 | |
| | | 18.0 | 59' 1" | 50 000 | 45 500 | 100 300 | 50 000 | 110 200 | |
| | | 20.0 | 65' 7" | 50 000 | 45 500 | 100 300 | 50 000 | 110 200 | |
| | | 22.0 | 72' 2" | 49 300 | 45 500 | 100 300 | 49 300 | 108 600 | |
| | | 24.0 | 78' 9" | 44 000 | 44 000 | 97 000 | 44 000 | 97 000 | |
| | | 26.0 | 85' 4" | 39 600 | 39 600 | 87 300 | 39 600 | 87 300 | |
| | | 28.0 | 91' 10" | 36 000 | 36 000 | 79 360 | 36 000 | 79 360 | |
| | | 30.0 | 98' 5" | 32 900 | 32 900 | 72 530 | 32 900 | 72 530 | |
| | | 32.0 | 105' 0" | 30 200 | 30 200 | 66 570 | 30 200 | 66 570 | |
| | | 34.0 | 111' 7" | 27 800 | 27 800 | 61 280 | 27 800 | 61 280 | |
| | | 36.0 | 118' 1" | 25 800 | 25 800 | 56 870 | 25 800 | 56 870 | |
| | | 38.0 | 124' 8" | 24 000 | 24 000 | 52 910 | 24 000 | 52 910 | |
| | | 40.0 | 131' 3" | 22 300 | 22 300 | 49 160 | 22 300 | 49 160 | |
| | | 42.0 | 137' 10" | 20 900 | 20 900 | 46 070 | 20 900 | 46 070 | |
| | | 44.0 | 144' 4" | 19 600 | 19 600 | 43 200 | 19 600 | 43 200 | |
| | | 46.0 | 150' 11" | 18 400 | 18 400 | 40 560 | 18 400 | 40 560 | |
| | | 48.0 | 157' 6" | 17 400 | 17 400 | 38 350 | 17 400 | 38 350 | |
| | | 50.0 | 164' 1" | 16 400 | 16 400 | 36 150 | 16 400 | 36 150 | |
| | | 52.0 | 170' 7" | 15 500 | 15 500 | 34 170 | 15 500 | 34 170 | |
| | | 54.0 | 177' 2" | 14 700 | 14 700 | 32 400 | 14 700 | 32 400 | |
| | | 56.0 | 183' 9" | 14 000 | 14 000 | 30 860 | 14 000 | 30 860 | |
| | | 58.0 | 190' 3" | 13 300 | 13 300 | 29 320 | 13 300 | 29 320 | |
| | | 60.0 | 196' 10" | 12 700 | 12 700 | 27 990 | 12 700 | 27 990 | |
| 39.0 (127'11") | 72.0 (236'3") | 16.0 | 52' 6" | 46 700 | 42 000 | 92 590 | 46 700 | 102 900 | |
| | | 18.0 | 59' 1" | 46 700 | 42 000 | 92 590 | 46 700 | 102 900 | |
| | | 20.0 | 65' 7" | 46 700 | 42 000 | 92 590 | 46 700 | 102 900 | |
| | | 22.0 | 72' 2" | 46 700 | 42 000 | 92 590 | 46 700 | 102 900 | |
| | | 24.0 | 78' 9" | 43 900 | 42 000 | 92 590 | 43 900 | 96 780 | |
| | | 26.0 | 85' 4" | 39 500 | 39 500 | 87 080 | 39 500 | 87 080 | |
| | | 28.0 | 91' 10" | 35 900 | 35 900 | 79 140 | 35 900 | 79 140 | |
| | | 30.0 | 98' 5" | 32 700 | 32 700 | 72 080 | 32 700 | 72 080 | |
| | | 32.0 | 105' 0" | 30 000 | 30 000 | 66 130 | 30 000 | 66 130 | |
| | | 34.0 | 111' 7" | 27 700 | 27 700 | 61 060 | 27 700 | 61 060 | |
| | | 36.0 | 118' 1" | 25 600 | 25 600 | 56 430 | 25 600 | 56 430 | |
| | | 38.0 | 124' 8" | 23 800 | 23 800 | 52 460 | 23 800 | 52 460 | |
| | | 40.0 | 131' 3" | 22 200 | 22 200 | 48 940 | 22 200 | 48 940 | |
| | | 42.0 | 137' 10" | 20 800 | 20 800 | 45 850 | 20 800 | 45 850 | |
| | | 44.0 | 144' 4" | 19 500 | 19 500 | 42 980 | 19 500 | 42 980 | |
| | | 46.0 | 150' 11" | 18 300 | 18 300 | 40 340 | 18 300 | 40 340 | |
| | | 48.0 | 157' 6" | 17 200 | 17 200 | 37 910 | 17 200 | 37 910 | |
| | | 50.0 | 164' 1" | 16 300 | 16 300 | 35 930 | 16 300 | 35 930 | |
| | | 52.0 | 170' 7" | 15 400 | 15 400 | 33 950 | 15 400 | 33 950 | |
| | | 54.0 | 177' 2" | 14 600 | 14 600 | 32 180 | 14 600 | 32 180 | |
| | | 56.0 | 183' 9" | 13 800 | 13 800 | 30 420 | 13 800 | 30 420 | |
| | | 58.0 | 190' 3" | 13 200 | 13 200 | 29 100 | 13 200 | 29 100 | |
| | | 60.0 | 196' 10" | 12 500 | 12 500 | 27 550 | 12 500 | 27 550 | |
| | | 62.0 | 203' 5" | 12 000 | 12 000 | 26 450 | 12 000 | 26 450 | |
| 64.0 | 210' 0" | 11 400 | 11 400 | 25 130 | 11 400 | 25 130 | | | |
| 39.0 (127'11") | 75.0 (246'1") | 16.0 | 52' 6" | 42 400 | 38 100 | 83 990 | 42 400 | 93 470 | |
| | | 18.0 | 59' 1" | 42 400 | 38 100 | 83 990 | 42 400 | 93 470 | |
| | | 20.0 | 65' 7" | 42 400 | 38 100 | 83 990 | 42 400 | 93 470 | |
| | | 22.0 | 72' 2" | 42 400 | 38 100 | 83 990 | 42 400 | 93 470 | |
| | | 24.0 | 78' 9" | 42 400 | 38 100 | 83 990 | 42 400 | 93 470 | |
| | | 26.0 | 85' 4" | 39 500 | 38 100 | 83 990 | 39 500 | 87 080 | |
| | | 28.0 | 91' 10" | 35 800 | 35 800 | 78 920 | 35 800 | 78 920 | |
| | | 30.0 | 98' 5" | 32 700 | 32 700 | 72 080 | 32 700 | 72 080 | |
| | | 32.0 | 105' 0" | 30 000 | 30 000 | 66 130 | 30 000 | 66 130 | |
| | | 34.0 | 111' 7" | 27 600 | 27 600 | 60 840 | 27 600 | 60 840 | |
| | | 36.0 | 118' 1" | 25 600 | 25 600 | 56 430 | 25 600 | 56 430 | |
| | | 38.0 | 124' 8" | 23 700 | 23 700 | 52 240 | 23 700 | 52 240 | |
| | | 40.0 | 131' 3" | 22 100 | 22 100 | 48 720 | 22 100 | 48 720 | |
| | | 42.0 | 137' 10" | 20 700 | 20 700 | 45 630 | 20 700 | 45 630 | |
| | | 44.0 | 144' 4" | 19 400 | 19 400 | 42 760 | 19 400 | 42 760 | |
| | | 46.0 | 150' 11" | 18 200 | 18 200 | 40 120 | 18 200 | 40 120 | |
| | | 48.0 | 157' 6" | 17 100 | 17 100 | 37 690 | 17 100 | 37 690 | |
| | | 50.0 | 164' 1" | 16 100 | 16 100 | 35 490 | 16 100 | 35 490 | |
| | | 52.0 | 170' 7" | 15 200 | 15 200 | 33 500 | 15 200 | 33 500 | |
| | | 54.0 | 177' 2" | 14 400 | 14 400 | 31 740 | 14 400 | 31 740 | |
| | | 56.0 | 183' 9" | 13 700 | 13 700 | 30 200 | 13 700 | 30 200 | |
| | | 58.0 | 190' 3" | 13 000 | 13 000 | 28 650 | 13 000 | 28 650 | |
| | | 60.0 | 196' 10" | 12 300 | 12 300 | 27 110 | 12 300 | 27 110 | |
| | | 62.0 | 203' 5" | 11 800 | 11 800 | 26 010 | 11 800 | 26 010 | |
| 64.0 | 210' 0" | 11 200 | 11 200 | 24 690 | 11 200 | 24 690 | | | |
| 66.0 | 216' 6" | 10 700 | 10 700 | 23 580 | 10 700 | 23 580 | | | |

| Mast (CB) length | Boom length | Working radius | | Rated load | | | | | |
|------------------------|------------------|-------------------|----------|------------|--------|-----------|--------|-------------|----|
| | | | | JIS rating | | BS rating | | PCSA rating | |
| | | | | m | ft in | kg | kg | lb | kg |
| 78.0 (255'11") | | 16.0 | 52' 6" | 38 200 | 34 700 | 76 490 | 38 200 | 84 210 | |
| | | 18.0 | 59' 1" | 38 200 | 34 700 | 76 490 | 38 200 | 84 210 | |
| | | 20.0 | 65' 7" | 38 200 | 34 700 | 76 490 | 38 200 | 84 210 | |
| | | 22.0 | 72' 2" | 38 200 | 34 700 | 76 490 | 38 200 | 84 210 | |
| | | 24.0 | 78' 9" | 38 200 | 34 700 | 76 490 | 38 200 | 84 210 | |
| | | 26.0 | 85' 4" | 38 200 | 34 700 | 76 490 | 38 200 | 84 210 | |
| | | 28.0 | 91' 10" | 35 600 | 34 700 | 76 490 | 35 600 | 78 480 | |
| | | 30.0 | 98' 5" | 32 400 | 32 400 | 71 420 | 32 400 | 71 420 | |
| | | 32.0 | 105' 0" | 29 700 | 29 700 | 65 470 | 29 700 | 65 470 | |
| | | 34.0 | 111' 7" | 27 400 | 27 400 | 60 400 | 27 400 | 60 400 | |
| | | 36.0 | 118' 1" | 25 300 | 25 300 | 55 770 | 25 300 | 55 770 | |
| | | 38.0 | 124' 8" | 23 500 | 23 500 | 51 800 | 23 500 | 51 800 | |
| | | 40.0 | 131' 3" | 21 900 | 21 900 | 48 280 | 21 900 | 48 280 | |
| | | 42.0 | 137' 10" | 20 400 | 20 400 | 44 970 | 20 400 | 44 970 | |
| | | 44.0 | 144' 4" | 19 100 | 19 100 | 42 100 | 19 100 | 42 100 | |
| | | 46.0 | 150' 11" | 17 900 | 17 900 | 39 460 | 17 900 | 39 460 | |
| | | 48.0 | 157' 6" | 16 900 | 16 900 | 37 250 | 16 900 | 37 250 | |
| | | 50.0 | 164' 1" | 15 900 | 15 900 | 35 050 | 15 900 | 35 050 | |
| | | 52.0 | 170' 7" | 15 000 | 15 000 | 33 060 | 15 000 | 33 060 | |
| | | 54.0 | 177' 2" | 14 200 | 14 200 | 31 300 | 14 200 | 31 300 | |
| | | 56.0 | 183' 9" | 13 400 | 13 400 | 29 540 | 13 400 | 29 540 | |
| | | 58.0 | 190' 3" | 12 700 | 12 700 | 27 990 | 12 700 | 27 990 | |
| | | 60.0 | 196' 10" | 12 100 | 12 100 | 26 670 | 12 100 | 26 670 | |
| | | 62.0 | 203' 5" | 11 500 | 11 500 | 25 350 | 11 500 | 25 350 | |
| 64.0 | 210' 0" | 10 900 | 10 900 | 24 020 | 10 900 | 24 020 | | | |
| 66.0 | 216' 6" | 10 400 | 10 400 | 22 920 | 10 400 | 22 920 | | | |
| 68.0 | 223' 1" | 10 000 | 10 000 | 22 040 | 10 000 | 22 040 | | | |
| 39.0 (127'11") | 81.0 (265'9") | 16.0 | 52' 6" | 34 900 | 31 100 | 68 560 | 34 900 | 76 940 | |
| | | 18.0 | 59' 1" | 34 900 | 31 100 | 68 560 | 34 900 | 76 940 | |
| | | 20.0 | 65' 7" | 34 900 | 31 100 | 68 560 | 34 900 | 76 940 | |
| | | 22.0 | 72' 2" | 34 900 | 31 100 | 68 560 | 34 900 | 76 940 | |
| | | 24.0 | 78' 9" | 34 900 | 31 100 | 68 560 | 34 900 | 76 940 | |
| | | 26.0 | 85' 4" | 34 900 | 31 100 | 68 560 | 34 900 | 76 940 | |
| | | 28.0 | 91' 10" | 34 900 | 31 100 | 68 560 | 34 900 | 76 940 | |
| | | 30.0 | 98' 5" | 32 200 | 31 100 | 68 560 | 32 200 | 70 980 | |
| | | 32.0 | 105' 0" | 29 500 | 29 500 | 65 030 | 29 500 | 65 030 | |
| | | 34.0 | 111' 7" | 27 100 | 27 100 | 59 740 | 27 100 | 59 740 | |
| | | 36.0 | 118' 1" | 25 100 | 25 100 | 55 330 | 25 100 | 55 330 | |
| | | 38.0 | 124' 8" | 23 300 | 23 300 | 51 360 | 23 300 | 51 360 | |
| | | 40.0 | 131' 3" | 21 600 | 21 600 | 47 610 | 21 600 | 47 610 | |
| | | 42.0 | 137' 10" | 20 200 | 20 200 | 44 630 | 20 200 | 44 630 | |
| | | 44.0 | 144' 4" | 18 900 | 18 900 | 41 660 | 18 900 | 41 660 | |
| | | 46.0 | 150' 11" | 17 700 | 17 700 | 39 020 | 17 700 | 39 020 | |
| | | 48.0 | 157' 6" | 16 600 | 16 600 | 36 590 | 16 600 | 36 590 | |
| | | 50.0 | 164' 1" | 15 600 | 15 600 | 34 390 | 15 600 | 34 390 | |
| | | 52.0 | 170' 7" | 14 800 | 14 800 | 32 620 | 14 800 | 32 620 | |
| | | 54.0 | 177' 2" | 13 900 | 13 900 | 30 640 | 13 900 | 30 640 | |
| | | 56.0 | 183' 9" | 13 200 | 13 200 | 29 100 | 13 200 | 29 100 | |
| | | 58.0 | 190' 3" | 12 500 | 12 500 | 27 550 | 12 500 | 27 550 | |
| | | 60.0 | 196' 10" | 11 800 | 11 800 | 26 010 | 11 800 | 26 010 | |
| | | 62.0 | 203' 5" | 11 200 | 11 200 | 24 690 | 11 200 | 24 690 | |
| 64.0 | 210' 0" | 10 700 | 10 700 | 23 580 | 10 700 | 23 580 | | | |
| 66.0 | 216' 6" | 10 200 | 10 200 | 22 480 | 10 200 | 22 480 | | | |
| 68.0 | 223' 1" | 9 700 | 9 700 | 21 380 | 9 700 | 21 380 | | | |
| 70.0 | 229' 8" | 9 300 | 9 300 | 20 500 | 9 300 | 20 500 | | | |
| 39.0 (127'11") | 84.0 (275'7") | 18.0 | 59' 1" | 31 500 | 28 700 | 63 270 | 31 500 | 69 440 | |
| | | 20.0 | 65' 7" | 31 500 | 28 700 | 63 270 | | | |

| Mast (CB) length | Boom length | Working radius | | Rated load | | | | |
|-------------------|-------------|----------------|----------|------------|-----------|--------|-------------|--------|
| | | | | JIS rating | BS rating | | PCSA rating | |
| | | | | | kg | kg | lb | kg |
| m (ft in) | m (ft in) | m | ft in | kg | kg | lb | kg | lb |
| 87.0 (285'5") | | 18.0 | 59' 1" | 29 600 | 26 100 | 57 530 | 29 600 | 65 250 |
| | | 20.0 | 65' 7" | 29 600 | 26 100 | 57 530 | 29 600 | 65 250 |
| | | 22.0 | 72' 2" | 29 600 | 26 100 | 57 530 | 29 600 | 65 250 |
| | | 24.0 | 78' 9" | 29 600 | 26 100 | 57 530 | 29 600 | 65 250 |
| | | 26.0 | 85' 4" | 29 600 | 26 100 | 57 530 | 29 600 | 65 250 |
| | | 28.0 | 91' 10" | 29 600 | 26 100 | 57 530 | 29 600 | 65 250 |
| | | 30.0 | 98' 5" | 29 600 | 26 100 | 57 530 | 29 600 | 65 250 |
| | | 32.0 | 105' 0" | 29 300 | 26 100 | 57 530 | 29 300 | 64 590 |
| | | 34.0 | 111' 7" | 26 900 | 26 100 | 57 530 | 26 900 | 59 300 |
| | | 36.0 | 118' 1" | 24 900 | 24 900 | 54 890 | 24 900 | 54 890 |
| | | 38.0 | 124' 8" | 23 000 | 23 000 | 50 700 | 23 000 | 50 700 |
| | | 40.0 | 131' 3" | 21 400 | 21 400 | 47 170 | 21 400 | 47 170 |
| | | 42.0 | 137' 10" | 20 000 | 20 000 | 44 090 | 20 000 | 44 090 |
| | | 44.0 | 144' 4" | 18 600 | 18 600 | 41 000 | 18 600 | 41 000 |
| | | 46.0 | 150' 11" | 17 500 | 17 500 | 38 580 | 17 500 | 38 580 |
| | | 48.0 | 157' 6" | 16 400 | 16 400 | 36 150 | 16 400 | 36 150 |
| | | 50.0 | 164' 1" | 15 400 | 15 400 | 33 950 | 15 400 | 33 950 |
| | | 52.0 | 170' 7" | 14 500 | 14 500 | 31 960 | 14 500 | 31 960 |
| | | 54.0 | 177' 2" | 13 700 | 13 700 | 30 200 | 13 700 | 30 200 |
| | | 56.0 | 183' 9" | 12 900 | 12 900 | 28 430 | 12 900 | 28 430 |
| | | 58.0 | 190' 3" | 12 200 | 12 200 | 26 890 | 12 200 | 26 890 |
| | | 60.0 | 196' 10" | 11 500 | 11 500 | 25 350 | 11 500 | 25 350 |
| | | 62.0 | 203' 5" | 10 900 | 10 900 | 24 020 | 10 900 | 24 020 |
| | | 64.0 | 210' 0" | 10 400 | 10 400 | 22 920 | 10 400 | 22 920 |
| | | 66.0 | 216' 6" | 9 800 | 9 800 | 21 600 | 9 800 | 21 600 |
| | | 68.0 | 223' 1" | 9 400 | 9 400 | 20 720 | 9 400 | 20 720 |
| | | 70.0 | 229' 8" | 8 900 | 8 900 | 19 620 | 8 900 | 19 620 |
| | | 72.0 | 236' 3" | 8 500 | 8 500 | 18 730 | 8 500 | 18 730 |
| 74.0 | 242' 9" | 8 100 | 8 100 | 17 850 | 8 100 | 17 850 | | |
| 76.0 | 249' 4" | 7 700 | 7 700 | 16 970 | 7 700 | 16 970 | | |
| 39.0 (127'11") | | 18.0 | 59' 1" | 27 100 | 23 700 | 52 240 | 27 100 | 59 740 |
| | | 20.0 | 65' 7" | 27 100 | 23 700 | 52 240 | 27 100 | 59 740 |
| | | 22.0 | 72' 2" | 27 100 | 23 700 | 52 240 | 27 100 | 59 740 |
| | | 24.0 | 78' 9" | 27 100 | 23 700 | 52 240 | 27 100 | 59 740 |
| | | 26.0 | 85' 4" | 27 100 | 23 700 | 52 240 | 27 100 | 59 740 |
| | | 28.0 | 91' 10" | 27 100 | 23 700 | 52 240 | 27 100 | 59 740 |
| | | 30.0 | 98' 5" | 27 100 | 23 700 | 52 240 | 27 100 | 59 740 |
| | | 32.0 | 105' 0" | 27 100 | 23 700 | 52 240 | 27 100 | 59 740 |
| | | 34.0 | 111' 7" | 26 800 | 23 700 | 52 240 | 26 800 | 59 080 |
| | | 36.0 | 118' 1" | 24 700 | 23 700 | 52 240 | 24 700 | 54 450 |
| | | 38.0 | 124' 8" | 22 900 | 22 900 | 50 480 | 22 900 | 50 480 |
| | | 40.0 | 131' 3" | 21 200 | 21 200 | 46 730 | 21 200 | 46 730 |
| | | 42.0 | 137' 10" | 19 800 | 19 800 | 43 650 | 19 800 | 43 650 |
| | | 44.0 | 144' 4" | 18 500 | 18 500 | 40 780 | 18 500 | 40 780 |
| | | 46.0 | 150' 11" | 17 300 | 17 300 | 38 130 | 17 300 | 38 130 |
| | | 48.0 | 157' 6" | 16 200 | 16 200 | 35 710 | 16 200 | 35 710 |
| | | 50.0 | 164' 1" | 15 200 | 15 200 | 33 500 | 15 200 | 33 500 |
| | | 52.0 | 170' 7" | 14 300 | 14 300 | 31 500 | 14 300 | 31 500 |
| | | 54.0 | 177' 2" | 13 500 | 13 500 | 29 760 | 13 500 | 29 760 |
| | | 56.0 | 183' 9" | 12 700 | 12 700 | 27 990 | 12 700 | 27 990 |
| | | 58.0 | 190' 3" | 12 000 | 12 000 | 26 450 | 12 000 | 26 450 |
| | | 60.0 | 196' 10" | 11 300 | 11 300 | 24 910 | 11 300 | 24 910 |
| | | 62.0 | 203' 5" | 10 700 | 10 700 | 23 580 | 10 700 | 23 580 |
| | | 64.0 | 210' 0" | 10 200 | 10 200 | 22 480 | 10 200 | 22 480 |
| | | 66.0 | 216' 6" | 9 600 | 9 600 | 21 160 | 9 600 | 21 160 |
| | | 68.0 | 223' 1" | 9 100 | 9 100 | 20 060 | 9 100 | 20 060 |
| | | 70.0 | 229' 8" | 8 700 | 8 700 | 19 170 | 8 700 | 19 170 |
| | | 72.0 | 236' 3" | 8 300 | 8 300 | 18 290 | 8 300 | 18 290 |
| 74.0 | 242' 9" | 7 900 | 7 900 | 17 410 | 7 900 | 17 410 | | |
| 76.0 | 249' 4" | 7 500 | 7 500 | 16 530 | 7 500 | 16 530 | | |
| 78.0 | 255' 11" | 7 200 | 7 200 | 15 870 | 7 200 | 15 870 | | |
| 39.0 (127'11") | | 20.0 | 65' 7" | 24 800 | 21 000 | 46 290 | 24 800 | 54 670 |
| | | 22.0 | 72' 2" | 24 800 | 21 000 | 46 290 | 24 800 | 54 670 |
| | | 24.0 | 78' 9" | 24 800 | 21 000 | 46 290 | 24 800 | 54 670 |
| | | 26.0 | 85' 4" | 24 800 | 21 000 | 46 290 | 24 800 | 54 670 |
| | | 28.0 | 91' 10" | 24 800 | 21 000 | 46 290 | 24 800 | 54 670 |
| | | 30.0 | 98' 5" | 24 800 | 21 000 | 46 290 | 24 800 | 54 670 |
| | | 32.0 | 105' 0" | 24 800 | 21 000 | 46 290 | 24 800 | 54 670 |
| | | 34.0 | 111' 7" | 24 800 | 21 000 | 46 290 | 24 800 | 54 670 |
| | | 36.0 | 118' 1" | 24 700 | 21 000 | 46 290 | 24 700 | 54 450 |
| | | 38.0 | 124' 8" | 22 800 | 21 000 | 46 290 | 22 800 | 50 260 |
| | | 40.0 | 131' 3" | 21 100 | 21 000 | 46 290 | 21 100 | 46 510 |
| | | 42.0 | 137' 10" | 19 800 | 19 800 | 43 650 | 19 800 | 43 650 |
| | | 44.0 | 144' 4" | 18 400 | 18 400 | 40 560 | 18 400 | 40 560 |
| | | 46.0 | 150' 11" | 17 200 | 17 200 | 37 910 | 17 200 | 37 910 |
| | | 48.0 | 157' 6" | 16 200 | 16 200 | 35 710 | 16 200 | 35 710 |
| | | 50.0 | 164' 1" | 15 200 | 15 200 | 33 500 | 15 200 | 33 500 |
| | | 52.0 | 170' 7" | 14 300 | 14 300 | 31 520 | 14 300 | 31 520 |
| | | 54.0 | 177' 2" | 13 400 | 13 400 | 29 540 | 13 400 | 29 540 |
| | | 56.0 | 183' 9" | 12 600 | 12 600 | 27 770 | 12 600 | 27 770 |
| | | 58.0 | 190' 3" | 11 900 | 11 900 | 26 230 | 11 900 | 26 230 |
| | | 60.0 | 196' 10" | 11 300 | 11 300 | 24 910 | 11 300 | 24 910 |
| | | 62.0 | 203' 5" | 10 700 | 10 700 | 23 580 | 10 700 | 23 580 |
| | | 64.0 | 210' 0" | 10 100 | 10 100 | 22 260 | 10 100 | 22 260 |
| | | 66.0 | 216' 6" | 9 600 | 9 600 | 21 160 | 9 600 | 21 160 |
| | | 68.0 | 223' 1" | 9 100 | 9 100 | 20 060 | 9 100 | 20 060 |
| | | 70.0 | 229' 8" | 8 600 | 8 600 | 18 950 | 8 600 | 18 950 |
| | | 72.0 | 236' 3" | 8 200 | 8 200 | 18 070 | 8 200 | 18 070 |
| | | 74.0 | 242' 9" | 7 800 | 7 800 | 17 190 | 7 800 | 17 190 |
| 76.0 | 249' 4" | 7 400 | 7 400 | 16 310 | 7 400 | 16 310 | | |
| 78.0 | 255' 11" | 7 000 | 7 000 | 15 430 | 7 000 | 15 430 | | |
| 80.0 | 262' 6" | 6 700 | 6 700 | 14 770 | 6 700 | 14 770 | | |
| 82.0 | 269' 0" | 6 300 | 6 300 | 13 880 | 6 300 | 13 880 | | |

| Mast (CB) length | Boom length | Working radius | | Rated load | | | | |
|-------------------|-------------|----------------|----------|------------|-----------|--------|-------------|--------|
| | | | | JIS rating | BS rating | | PCSA rating | |
| | | | | | kg | kg | lb | kg |
| m (ft in) | m (ft in) | m | ft in | kg | kg | lb | kg | lb |
| 87.0 (285'5") | | 20.0 | 65' 7" | 22 800 | 19 200 | 42 320 | 22 800 | 50 260 |
| | | 22.0 | 72' 2" | 22 800 | 19 200 | 42 320 | 22 800 | 50 260 |
| | | 24.0 | 78' 9" | 22 800 | 19 200 | 42 320 | 22 800 | 50 260 |
| | | 26.0 | 85' 4" | 22 800 | 19 200 | 42 320 | 22 800 | 50 260 |
| | | 28.0 | 91' 10" | 22 800 | 19 200 | 42 320 | 22 800 | 50 260 |
| | | 30.0 | 98' 5" | 22 800 | 19 200 | 42 320 | 22 800 | 50 260 |
| | | 32.0 | 105' 0" | 22 800 | 19 200 | 42 320 | 22 800 | 50 260 |
| | | 34.0 | 111' 7" | 22 800 | 19 200 | 42 320 | 22 800 | 50 260 |
| | | 36.0 | 118' 1" | 22 800 | 19 200 | 42 320 | 22 800 | 50 260 |
| | | 38.0 | 124' 8" | 22 700 | 19 200 | 42 320 | 22 700 | 50 040 |
| | | 40.0 | 131' 3" | 21 100 | 19 200 | 42 320 | 21 100 | 46 510 |
| | | 42.0 | 137' 10" | 19 600 | 19 200 | 42 320 | 19 600 | 43 200 |
| | | 44.0 | 144' 4" | 18 300 | 18 300 | 40 340 | 18 300 | 40 340 |
| | | 46.0 | 150' 11" | 17 100 | 17 100 | 37 690 | 17 100 | 37 690 |
| | | 48.0 | 157' 6" | 16 000 | 16 000 | 35 270 | 16 000 | 35 270 |
| | | 50.0 | 164' 1" | 15 000 | 15 000 | 33 060 | 15 000 | 33 060 |
| | | 52.0 | 170' 7" | 14 100 | 14 100 | 31 080 | 14 100 | 31 080 |
| | | 54.0 | 177' 2" | 13 300 | 13 300 | 29 320 | 13 300 | 29 320 |
| | | 56.0 | 183' 9" | 12 500 | 12 500 | 27 550 | 12 500 | 27 550 |
| | | 58.0 | 190' 3" | 11 800 | 11 800 | 26 010 | 11 800 | 26 010 |
| | | 60.0 | 196' 10" | 11 200 | 11 200 | 24 690 | 11 200 | 24 690 |
| | | 62.0 | 203' 5" | 10 500 | 10 500 | 23 140 | 10 500 | 23 140 |
| | | 64.0 | 210' 0" | 10 000 | 10 000 | 22 040 | 10 000 | 22 040 |
| | | 66.0 | 216' 6" | 9 400 | 9 400 | 20 720 | 9 400 | 20 720 |
| | | 68.0 | 223' 1" | 8 900 | 8 900 | 19 620 | 8 900 | 19 620 |
| | | 70.0 | 229' 8" | 8 500 | 8 500 | 18 730 | 8 500 | 18 730 |
| | | 72.0 | 236' 3" | 8 000 | 8 000 | 17 630 | 8 000 | 17 630 |
| | | 74.0 | 242' 9" | 7 600 | 7 600 | 16 750 | 7 600 | 16 750 |
| 76.0 | 249' 4" | 7 200 | 7 200 | 15 870 | 7 200 | 15 870 | | |
| 78.0 | 255' 11" | 6 900 | 6 900 | 15 210 | 6 900 | 15 210 | | |
| 80.0 | 262' 6" | 6 500 | 6 500 | 14 320 | 6 500 | 14 320 | | |
| 82.0 | 269' 0" | 6 200 | 6 200 | 13 660 | 6 200 | 13 660 | | |
| 84.0 | 275' 7" | 5 800 | 5 800 | 12 780 | 5 800 | 12 780 | | |
| 39.0 (127'11") | | 20.0 | 65' 7" | 21 100 | 17 500 | 38 580 | 21 100 | 46 510 |
| | | 22.0 | 72' 2" | 21 100 | 17 500 | 38 580 | 21 100 | 46 510 |
| | | 24.0 | 78' 9" | 21 100 | 17 500 | 38 580 | 21 100 | 46 510 |
| | | 26.0 | 85' 4" | 21 100 | 17 500 | 38 580 | 21 100 | 46 510 |
| | | 28.0 | 91' 10" | 21 100 | 17 500 | 38 580 | 21 100 | 46 510 |
| | | 30.0 | 98' 5" | 21 100 | 17 500 | 38 580 | 21 100 | 46 510 |
| | | 32.0 | 105' 0" | 21 100 | 17 500 | | | |

Series 2

Tubular Chord Crane Boom in 360° Working Area

Heavy-duty Service

| Mast (CB) length | Boom length | Working radius | | Rated load | | | | |
|------------------|----------------|----------------|---------|------------|---------|-----------|---------|-------------|
| | | | | JIS rating | | BS rating | | PCSA rating |
| | | | | kg | kg | lb | kg | lb |
| 24.0 (78'9") | 36.0 (118'1") | 8.1 | 26' 7" | 180 000 | 180 000 | 396 800 | 180 000 | 396 800 |
| | | 9.0 | 29' 6" | 170 000 | 170 000 | 374 700 | 170 000 | 374 700 |
| | | 10.0 | 32' 10" | 160 000 | 160 000 | 352 700 | 160 000 | 352 700 |
| | | 12.0 | 39' 4" | 133 000 | 133 000 | 293 200 | 133 000 | 293 200 |
| | | 14.0 | 45' 11" | 107 700 | 107 700 | 237 400 | 107 700 | 237 400 |
| | | 16.0 | 52' 6" | 90 300 | 90 300 | 199 000 | 90 300 | 199 000 |
| | | 18.0 | 59' 1" | 77 400 | 77 400 | 170 600 | 77 400 | 170 600 |
| | | 20.0 | 65' 7" | 67 700 | 67 700 | 149 200 | 67 700 | 149 200 |
| | | 22.0 | 72' 2" | 60 000 | 60 000 | 132 200 | 60 000 | 132 200 |
| | | 24.0 | 78' 9" | 53 700 | 53 700 | 118 300 | 53 700 | 118 300 |
| | | 26.0 | 85' 4" | 48 600 | 48 600 | 107 100 | 48 600 | 107 100 |
| | | 28.0 | 91' 10" | 44 400 | 44 400 | 97 880 | 44 400 | 97 880 |
| 30.0 | 98' 5" | 40 800 | 40 800 | 89 940 | 40 800 | 89 940 | | |
| 32.0 | 105' 0" | 37 700 | 37 700 | 83 110 | 37 700 | 83 110 | | |
| 24.0 (78'9") | 39.0 (127'11") | 9.0 | 29' 6" | 169 200 | 169 200 | 373 000 | 169 200 | 373 000 |
| | | 10.0 | 32' 10" | 160 000 | 160 000 | 352 700 | 160 000 | 352 700 |
| | | 12.0 | 39' 4" | 132 700 | 132 700 | 292 500 | 132 700 | 292 500 |
| | | 14.0 | 45' 11" | 107 400 | 107 400 | 236 700 | 107 400 | 236 700 |
| | | 16.0 | 52' 6" | 89 900 | 89 900 | 198 100 | 89 900 | 198 100 |
| | | 18.0 | 59' 1" | 77 100 | 77 100 | 169 900 | 77 100 | 169 900 |
| | | 20.0 | 65' 7" | 67 300 | 67 300 | 148 300 | 67 300 | 148 300 |
| | | 22.0 | 72' 2" | 59 600 | 59 600 | 131 300 | 59 600 | 131 300 |
| | | 24.0 | 78' 9" | 53 400 | 53 400 | 117 700 | 53 400 | 117 700 |
| | | 26.0 | 85' 4" | 48 300 | 48 300 | 106 400 | 48 300 | 106 400 |
| | | 28.0 | 91' 10" | 44 000 | 44 000 | 97 000 | 44 000 | 97 000 |
| | | 30.0 | 98' 5" | 40 300 | 40 300 | 88 840 | 40 300 | 88 840 |
| 32.0 | 105' 0" | 37 200 | 37 200 | 82 010 | 37 200 | 82 010 | | |
| 34.0 | 111' 7" | 34 600 | 34 600 | 76 280 | 34 600 | 76 280 | | |
| 24.0 (78'9") | 42.0 (137'10") | 10.0 | 32' 10" | 150 000 | 150 000 | 330 600 | 150 000 | 330 600 |
| | | 12.0 | 39' 4" | 132 500 | 132 500 | 292 100 | 132 500 | 292 100 |
| | | 14.0 | 45' 11" | 107 200 | 107 200 | 236 300 | 107 200 | 236 300 |
| | | 16.0 | 52' 6" | 89 700 | 89 700 | 197 700 | 89 700 | 197 700 |
| | | 18.0 | 59' 1" | 76 900 | 76 900 | 169 500 | 76 900 | 169 500 |
| | | 20.0 | 65' 7" | 67 100 | 67 100 | 147 900 | 67 100 | 147 900 |
| | | 22.0 | 72' 2" | 59 400 | 59 400 | 130 900 | 59 400 | 130 900 |
| | | 24.0 | 78' 9" | 53 100 | 53 100 | 117 000 | 53 100 | 117 000 |
| | | 26.0 | 85' 4" | 48 000 | 48 000 | 105 800 | 48 000 | 105 800 |
| | | 28.0 | 91' 10" | 43 700 | 43 700 | 96 340 | 43 700 | 96 340 |
| | | 30.0 | 98' 5" | 40 000 | 40 000 | 88 180 | 40 000 | 88 180 |
| | | 32.0 | 105' 0" | 36 900 | 36 900 | 81 350 | 36 900 | 81 340 |
| 34.0 | 111' 7" | 34 200 | 34 200 | 75 390 | 34 200 | 75 390 | | |
| 36.0 | 118' 1" | 31 900 | 31 900 | 70 320 | 31 900 | 70 320 | | |
| 38.0 | 124' 8" | 29 800 | 29 800 | 65 690 | 29 800 | 65 690 | | |
| 24.0 (78'9") | 45.0 (147'8") | 10.0 | 32' 10" | 141 700 | 141 700 | 312 300 | 141 700 | 312 300 |
| | | 12.0 | 39' 4" | 132 500 | 132 500 | 292 100 | 132 500 | 292 100 |
| | | 14.0 | 45' 11" | 107 200 | 107 200 | 236 300 | 107 200 | 236 300 |
| | | 16.0 | 52' 6" | 89 600 | 89 600 | 197 500 | 89 600 | 197 500 |
| | | 18.0 | 59' 1" | 76 800 | 76 800 | 169 300 | 76 800 | 169 300 |
| | | 20.0 | 65' 7" | 67 000 | 67 000 | 147 700 | 67 000 | 147 700 |
| | | 22.0 | 72' 2" | 59 300 | 59 300 | 130 700 | 59 300 | 130 700 |
| | | 24.0 | 78' 9" | 53 000 | 53 000 | 116 800 | 53 000 | 116 800 |
| | | 26.0 | 85' 4" | 47 800 | 47 800 | 105 300 | 47 800 | 105 300 |
| | | 28.0 | 91' 10" | 43 500 | 43 500 | 95 900 | 43 500 | 95 890 |
| | | 30.0 | 98' 5" | 39 900 | 39 900 | 87 960 | 39 900 | 87 960 |
| | | 32.0 | 105' 0" | 36 700 | 36 700 | 80 900 | 36 700 | 80 900 |
| 34.0 | 111' 7" | 34 000 | 34 000 | 74 950 | 34 000 | 74 950 | | |
| 36.0 | 118' 1" | 31 600 | 31 600 | 69 660 | 31 600 | 69 660 | | |
| 38.0 | 124' 8" | 29 500 | 29 500 | 65 030 | 29 500 | 65 030 | | |
| 40.0 | 131' 3" | 27 700 | 27 700 | 61 060 | 27 700 | 61 060 | | |
| 24.0 (78'9") | 48.0 (157'6") | 12.0 | 39' 4" | 129 600 | 129 600 | 285 700 | 129 600 | 285 700 |
| | | 14.0 | 45' 11" | 107 000 | 107 000 | 235 800 | 107 000 | 235 800 |
| | | 16.0 | 52' 6" | 89 500 | 89 500 | 197 300 | 89 500 | 197 300 |
| | | 18.0 | 59' 1" | 76 600 | 76 600 | 168 800 | 76 600 | 168 800 |
| | | 20.0 | 65' 7" | 66 800 | 66 800 | 147 200 | 66 800 | 147 200 |
| | | 22.0 | 72' 2" | 59 100 | 59 100 | 130 200 | 59 100 | 130 200 |
| | | 24.0 | 78' 9" | 52 800 | 52 800 | 116 400 | 52 800 | 116 400 |
| | | 26.0 | 85' 4" | 47 700 | 47 700 | 105 100 | 47 700 | 105 100 |
| | | 28.0 | 91' 10" | 43 300 | 43 300 | 95 460 | 43 300 | 95 450 |
| | | 30.0 | 98' 5" | 39 700 | 39 700 | 87 520 | 39 700 | 87 520 |
| | | 32.0 | 105' 0" | 36 500 | 36 500 | 80 460 | 36 500 | 80 460 |
| | | 34.0 | 111' 7" | 33 800 | 33 800 | 74 510 | 33 800 | 74 510 |
| 36.0 | 118' 1" | 31 400 | 31 400 | 69 220 | 31 400 | 69 220 | | |
| 38.0 | 124' 8" | 29 300 | 29 300 | 64 590 | 29 300 | 64 590 | | |
| 40.0 | 131' 3" | 27 400 | 27 400 | 60 400 | 27 400 | 60 400 | | |
| 42.0 | 137' 10" | 25 700 | 25 700 | 56 650 | 25 700 | 56 650 | | |

| Mast (CB) length | Boom length | Working radius | | Rated load | | | | |
|------------------|---------------|----------------|---------|------------|---------|-----------|---------|-------------|
| | | | | JIS rating | | BS rating | | PCSA rating |
| | | | | kg | kg | lb | kg | lb |
| 30.0 (98'5") | 51.0 (167'4") | 12.0 | 39' 4" | 125 000 | 125 000 | 275 500 | 125 000 | 275 500 |
| | | 14.0 | 45' 11" | 107 200 | 107 200 | 236 300 | 107 200 | 236 300 |
| | | 16.0 | 52' 6" | 89 600 | 89 600 | 197 500 | 89 600 | 197 500 |
| | | 18.0 | 59' 1" | 76 700 | 76 700 | 169 000 | 76 700 | 169 000 |
| | | 20.0 | 65' 7" | 66 800 | 66 800 | 147 200 | 66 800 | 147 200 |
| | | 22.0 | 72' 2" | 59 000 | 59 000 | 130 000 | 59 000 | 130 000 |
| | | 24.0 | 78' 9" | 52 700 | 52 700 | 116 100 | 52 700 | 116 100 |
| | | 26.0 | 85' 4" | 47 500 | 47 500 | 104 700 | 47 500 | 104 700 |
| | | 28.0 | 91' 10" | 43 200 | 43 200 | 95 230 | 43 200 | 95 230 |
| | | 30.0 | 98' 5" | 39 500 | 39 500 | 87 080 | 39 500 | 87 080 |
| | | 32.0 | 105' 0" | 36 300 | 36 300 | 80 020 | 36 300 | 80 020 |
| | | 34.0 | 111' 7" | 33 500 | 33 500 | 73 850 | 33 500 | 73 850 |
| 36.0 | 118' 1" | 31 100 | 31 100 | 68 560 | 31 100 | 68 560 | | |
| 38.0 | 124' 8" | 29 000 | 29 000 | 63 930 | 29 000 | 63 930 | | |
| 40.0 | 131' 3" | 27 100 | 27 100 | 59 740 | 27 100 | 59 740 | | |
| 42.0 | 137' 10" | 25 400 | 25 400 | 55 990 | 25 400 | 55 990 | | |
| 44.0 | 144' 4" | 23 900 | 23 900 | 52 690 | 23 900 | 52 690 | | |
| 30.0 (98'5") | 54.0 (177'2") | 12.0 | 39' 4" | 117 100 | 117 100 | 258 100 | 117 100 | 258 100 |
| | | 14.0 | 45' 11" | 107 100 | 107 100 | 236 100 | 107 100 | 236 100 |
| | | 16.0 | 52' 6" | 89 500 | 89 500 | 197 300 | 89 500 | 197 300 |
| | | 18.0 | 59' 1" | 76 500 | 76 500 | 168 600 | 76 500 | 168 600 |
| | | 20.0 | 65' 7" | 66 700 | 66 700 | 147 000 | 66 700 | 147 000 |
| | | 22.0 | 72' 2" | 58 900 | 58 900 | 129 800 | 58 900 | 129 800 |
| | | 24.0 | 78' 9" | 52 600 | 52 600 | 115 900 | 52 600 | 115 900 |
| | | 26.0 | 85' 4" | 47 400 | 47 400 | 104 400 | 47 400 | 104 400 |
| | | 28.0 | 91' 10" | 43 000 | 43 000 | 94 790 | 43 000 | 94 790 |
| | | 30.0 | 98' 5" | 39 300 | 39 300 | 86 640 | 39 300 | 86 640 |
| | | 32.0 | 105' 0" | 36 100 | 36 100 | 79 580 | 36 100 | 79 580 |
| | | 34.0 | 111' 7" | 33 300 | 33 300 | 73 410 | 33 300 | 73 410 |
| 36.0 | 118' 1" | 30 900 | 30 900 | 68 120 | 30 900 | 68 120 | | |
| 38.0 | 124' 8" | 28 800 | 28 800 | 63 490 | 28 800 | 63 490 | | |
| 40.0 | 131' 3" | 26 900 | 26 900 | 59 300 | 26 900 | 59 300 | | |
| 42.0 | 137' 10" | 25 200 | 25 200 | 55 550 | 25 200 | 55 550 | | |
| 44.0 | 144' 4" | 23 700 | 23 700 | 52 240 | 23 700 | 52 240 | | |
| 46.0 | 150' 11" | 22 300 | 22 300 | 49 160 | 22 300 | 49 160 | | |
| 48.0 | 157' 6" | 21 100 | 21 100 | 46 510 | 21 100 | 46 510 | | |
| 30.0 (98'5") | 57.0 (187'0") | 12.0 | 39' 4" | 108 800 | 108 800 | 239 800 | 108 800 | 239 800 |
| | | 14.0 | 45' 11" | 107 000 | 107 000 | 235 800 | 107 000 | 235 800 |
| | | 16.0 | 52' 6" | 89 400 | 89 400 | 197 000 | 89 400 | 197 000 |
| | | 18.0 | 59' 1" | 76 400 | 76 400 | 168 400 | 76 400 | 168 400 |
| | | 20.0 | 65' 7" | 66 500 | 66 500 | 146 600 | 66 500 | 146 600 |
| | | 22.0 | 72' 2" | 58 700 | 58 700 | 129 400 | 58 700 | 129 400 |
| | | 24.0 | 78' 9" | 52 400 | 52 400 | 115 500 | 52 400 | 115 500 |
| | | 26.0 | 85' 4" | 47 200 | 47 200 | 104 000 | 47 200 | 104 000 |
| | | 28.0 | 91' 10" | 42 800 | 42 800 | 94 350 | 42 800 | 94 350 |
| | | 30.0 | 98' 5" | 39 100 | 39 100 | 86 200 | 39 100 | 86 190 |
| | | 32.0 | 105' 0" | 35 900 | 35 900 | 79 140 | 35 900 | 79 140 |
| | | 34.0 | 111' 7" | 33 200 | 33 200 | 73 190 | 33 200 | 73 190 |
| 36.0 | 118' 1" | 30 700 | 30 700 | 67 680 | 30 700 | 67 680 | | |
| 38.0 | 124' 8" | 28 600 | 28 600 | 63 050 | 28 600 | 63 050 | | |
| 40.0 | 131' 3" | 26 700 | 26 700 | 58 860 | 26 700 | 58 860 | | |
| 42.0 | 137' 10" | 25 000 | 25 000 | 55 110 | 25 000 | 55 110 | | |
| 44.0 | 144' 4" | 23 400 | 23 400 | 51 580 | 23 400 | 51 580 | | |

Light-duty Service

| Mast (CB) length | Boom length | Working radius | | Rated load | | | | | | |
|------------------|-------------------|----------------|---------|------------|---------|-----------|---------|-------------|---------|---------|
| | | | | JIS rating | | BS rating | | PCSA rating | | |
| | | | | m | ft in | kg | kg | lb | kg | lb |
| 24.0 (78'9") | 39.0 (127'11") | 9.0 | 29' 6" | 100 000 | 100 000 | 220 400 | 100 000 | 220 400 | 100 000 | 220 400 |
| | | 10.0 | 32' 10" | 100 000 | 100 000 | 220 400 | 100 000 | 220 400 | 100 000 | 220 400 |
| | | 12.0 | 39' 4" | 100 000 | 100 000 | 220 400 | 100 000 | 220 400 | 100 000 | 220 400 |
| | | 14.0 | 45' 11" | 100 000 | 100 000 | 220 400 | 100 000 | 220 400 | 100 000 | 220 400 |
| | | 16.0 | 52' 6" | 91 400 | 91 400 | 201 500 | 91 400 | 201 400 | 91 400 | 201 400 |
| | | 18.0 | 59' 1" | 78 600 | 78 600 | 173 200 | 78 600 | 173 200 | 78 600 | 173 200 |
| | | 20.0 | 65' 7" | 68 800 | 68 800 | 151 600 | 68 800 | 151 600 | 68 800 | 151 600 |
| | | 22.0 | 72' 2" | 61 100 | 61 100 | 134 700 | 61 100 | 134 700 | 61 100 | 134 700 |
| | | 24.0 | 78' 9" | 54 800 | 54 800 | 120 800 | 54 800 | 120 800 | 54 800 | 120 800 |
| | | 26.0 | 85' 4" | 49 600 | 49 600 | 109 300 | 49 600 | 109 300 | 49 600 | 109 300 |
| | | 28.0 | 91' 10" | 45 300 | 45 300 | 99 860 | 45 300 | 99 860 | 45 300 | 99 860 |
| | | 30.0 | 98' 5" | 41 600 | 41 600 | 91 710 | 41 600 | 91 710 | 41 600 | 91 710 |
| 32.0 | 105' 0" | 38 500 | 38 500 | 84 870 | 38 500 | 84 870 | 38 500 | 84 870 | | |
| 34.0 | 111' 7" | 35 800 | 35 800 | 78 920 | 35 800 | 78 920 | 35 800 | 78 920 | | |
| 24.0 (78'9") | 42.0 (137'10") | 10.0 | 32' 10" | 100 000 | 100 000 | 220 400 | 100 000 | 220 400 | 100 000 | 220 400 |
| | | 12.0 | 39' 4" | 100 000 | 100 000 | 220 400 | 100 000 | 220 400 | 100 000 | 220 400 |
| | | 14.0 | 45' 11" | 100 000 | 100 000 | 220 400 | 100 000 | 220 400 | 100 000 | 220 400 |
| | | 16.0 | 52' 6" | 91 200 | 91 200 | 201 000 | 91 200 | 201 000 | 91 200 | 201 000 |
| | | 18.0 | 59' 1" | 78 300 | 78 300 | 172 600 | 78 300 | 172 600 | 78 300 | 172 600 |
| | | 20.0 | 65' 7" | 68 500 | 68 500 | 151 000 | 68 500 | 151 000 | 68 500 | 151 000 |
| | | 22.0 | 72' 2" | 60 800 | 60 800 | 134 000 | 60 800 | 134 000 | 60 800 | 134 000 |
| | | 24.0 | 78' 9" | 54 500 | 54 500 | 120 100 | 54 500 | 120 100 | 54 500 | 120 100 |
| | | 26.0 | 85' 4" | 49 400 | 49 400 | 108 900 | 49 400 | 108 900 | 49 400 | 108 900 |
| | | 28.0 | 91' 10" | 45 000 | 45 000 | 99 200 | 45 000 | 99 200 | 45 000 | 99 200 |
| | | 30.0 | 98' 5" | 41 400 | 41 400 | 91 260 | 41 400 | 91 260 | 41 400 | 91 260 |
| | | 32.0 | 105' 0" | 38 200 | 38 200 | 84 210 | 38 200 | 84 210 | 38 200 | 84 210 |
| 34.0 | 111' 7" | 35 500 | 35 500 | 78 260 | 35 500 | 78 260 | 35 500 | 78 260 | | |
| 36.0 | 118' 1" | 33 100 | 33 100 | 72 970 | 33 100 | 72 970 | 33 100 | 72 970 | | |
| 38.0 | 124' 8" | 31 000 | 31 000 | 68 340 | 31 000 | 68 340 | 31 000 | 68 340 | | |
| 24.0 (78'9") | 45.0 (147'8") | 10.0 | 32' 10" | 100 000 | 100 000 | 220 400 | 100 000 | 220 400 | 100 000 | 220 400 |
| | | 12.0 | 39' 4" | 100 000 | 100 000 | 220 400 | 100 000 | 220 400 | 100 000 | 220 400 |
| | | 14.0 | 45' 11" | 100 000 | 100 000 | 220 400 | 100 000 | 220 400 | 100 000 | 220 400 |
| | | 16.0 | 52' 6" | 90 800 | 90 800 | 200 100 | 90 800 | 200 100 | 90 800 | 200 100 |
| | | 18.0 | 59' 1" | 78 000 | 78 000 | 171 900 | 78 000 | 171 900 | 78 000 | 171 900 |
| | | 20.0 | 65' 7" | 68 200 | 68 200 | 150 300 | 68 200 | 150 300 | 68 200 | 150 300 |
| | | 22.0 | 72' 2" | 60 400 | 60 400 | 133 100 | 60 400 | 133 100 | 60 400 | 133 100 |
| | | 24.0 | 78' 9" | 54 200 | 54 200 | 119 400 | 54 200 | 119 400 | 54 200 | 119 400 |
| | | 26.0 | 85' 4" | 49 000 | 49 000 | 108 000 | 49 000 | 108 000 | 49 000 | 108 000 |
| | | 28.0 | 91' 10" | 44 700 | 44 700 | 98 540 | 44 700 | 98 540 | 44 700 | 98 540 |
| | | 30.0 | 98' 5" | 41 000 | 41 000 | 90 380 | 41 000 | 90 380 | 41 000 | 90 380 |
| | | 32.0 | 105' 0" | 37 800 | 37 800 | 83 330 | 37 800 | 83 330 | 37 800 | 83 330 |
| 34.0 | 111' 7" | 35 100 | 35 100 | 77 380 | 35 100 | 77 380 | 35 100 | 77 380 | | |
| 36.0 | 118' 1" | 32 700 | 32 700 | 72 080 | 32 700 | 72 080 | 32 700 | 72 080 | | |
| 38.0 | 124' 8" | 30 500 | 30 500 | 67 230 | 30 500 | 67 230 | 30 500 | 67 230 | | |
| 40.0 | 131' 3" | 28 700 | 28 700 | 63 270 | 28 700 | 63 270 | 28 700 | 63 270 | | |
| 24.0 (78'9") | 48.0 (157'6") | 12.0 | 39' 4" | 100 000 | 100 000 | 220 400 | 100 000 | 220 400 | 100 000 | 220 400 |
| | | 14.0 | 45' 11" | 100 000 | 100 000 | 220 400 | 100 000 | 220 400 | 100 000 | 220 400 |
| | | 16.0 | 52' 6" | 90 600 | 90 600 | 199 700 | 90 600 | 199 700 | 90 600 | 199 700 |
| | | 18.0 | 59' 1" | 77 900 | 77 700 | 171 200 | 77 700 | 171 200 | 77 700 | 171 200 |
| | | 20.0 | 65' 7" | 67 900 | 67 900 | 149 600 | 67 900 | 149 600 | 67 900 | 149 600 |
| | | 22.0 | 72' 2" | 60 100 | 60 100 | 132 400 | 60 100 | 132 400 | 60 100 | 132 400 |
| | | 24.0 | 78' 9" | 53 900 | 53 900 | 118 800 | 53 900 | 118 800 | 53 900 | 118 800 |
| | | 26.0 | 85' 4" | 48 700 | 48 700 | 107 300 | 48 700 | 107 300 | 48 700 | 107 300 |
| | | 28.0 | 91' 10" | 44 400 | 44 400 | 97 880 | 44 400 | 97 880 | 44 400 | 97 880 |
| | | 30.0 | 98' 5" | 40 700 | 40 700 | 89 720 | 40 700 | 89 720 | 40 700 | 89 720 |
| | | 32.0 | 105' 0" | 37 500 | 37 500 | 82 670 | 37 500 | 82 670 | 37 500 | 82 670 |
| | | 34.0 | 111' 7" | 34 800 | 34 800 | 76 710 | 34 800 | 76 710 | 34 800 | 76 710 |
| 36.0 | 118' 1" | 32 300 | 32 300 | 71 200 | 32 300 | 71 200 | 32 300 | 71 200 | | |
| 38.0 | 124' 8" | 30 200 | 30 200 | 66 570 | 30 200 | 66 570 | 30 200 | 66 570 | | |
| 40.0 | 131' 3" | 28 300 | 28 300 | 62 380 | 28 300 | 62 380 | 28 300 | 62 380 | | |
| 42.0 | 137' 10" | 26 700 | 26 700 | 58 860 | 26 700 | 58 860 | 26 700 | 58 860 | | |
| 30.0 (98'5") | 51.0 (167'4") | 12.0 | 39' 4" | 100 000 | 100 000 | 220 400 | 100 000 | 220 400 | 100 000 | 220 400 |
| | | 14.0 | 45' 11" | 100 000 | 100 000 | 220 400 | 100 000 | 220 400 | 100 000 | 220 400 |
| | | 16.0 | 52' 6" | 90 800 | 90 800 | 200 100 | 90 800 | 200 100 | 90 800 | 200 100 |
| | | 18.0 | 59' 1" | 77 900 | 77 900 | 171 700 | 77 900 | 171 700 | 77 900 | 171 700 |
| | | 20.0 | 65' 7" | 68 000 | 68 000 | 149 900 | 68 000 | 149 900 | 68 000 | 149 900 |
| | | 22.0 | 72' 2" | 60 200 | 60 200 | 132 700 | 60 200 | 132 700 | 60 200 | 132 700 |
| | | 24.0 | 78' 9" | 53 900 | 53 900 | 118 800 | 53 900 | 118 800 | 53 900 | 118 800 |
| | | 26.0 | 85' 4" | 48 700 | 48 700 | 107 300 | 48 700 | 107 300 | 48 700 | 107 300 |
| | | 28.0 | 91' 10" | 44 400 | 44 400 | 97 880 | 44 400 | 97 880 | 44 400 | 97 880 |
| | | 30.0 | 98' 5" | 40 700 | 40 700 | 89 720 | 40 700 | 89 720 | 40 700 | 89 720 |
| | | 32.0 | 105' 0" | 37 500 | 37 500 | 82 670 | 37 500 | 82 670 | 37 500 | 82 670 |
| | | 34.0 | 111' 7" | 34 700 | 34 700 | 76 490 | 34 700 | 76 490 | 34 700 | 76 490 |
| 36.0 | 118' 1" | 32 300 | 32 300 | 71 200 | 32 300 | 71 200 | 32 300 | 71 200 | | |
| 38.0 | 124' 8" | 30 100 | 30 100 | 66 350 | 30 100 | 66 350 | 30 100 | 66 350 | | |
| 40.0 | 131' 3" | 28 200 | 28 200 | 62 160 | 28 200 | 62 160 | 28 200 | 62 160 | | |
| 42.0 | 137' 10" | 26 500 | 26 500 | 58 420 | 26 500 | 58 420 | 26 500 | 58 420 | | |
| 44.0 | 144' 4" | 25 000 | 25 000 | 55 110 | 25 000 | 55 110 | 25 000 | 55 110 | | |
| 30.0 (98'5") | 54.0 (177'2") | 12.0 | 39' 4" | 100 000 | 100 000 | 220 400 | 100 000 | 220 400 | 100 000 | 220 400 |
| | | 14.0 | 45' 11" | 100 000 | 100 000 | 220 400 | 100 000 | 220 400 | 100 000 | 220 400 |
| | | 16.0 | 52' 6" | 90 500 | 90 500 | 199 500 | 90 500 | 199 500 | 90 500 | 199 500 |
| | | 18.0 | 59' 1" | 77 500 | 77 500 | 170 800 | 77 500 | 170 800 | 77 500 | 170 800 |
| | | 20.0 | 65' 7" | 67 600 | 67 600 | 149 000 | 67 600 | 149 000 | 67 600 | 149 000 |
| | | 22.0 | 72' 2" | 59 800 | 59 800 | 131 800 | 59 800 | 131 800 | 59 800 | 131 800 |
| | | 24.0 | 78' 9" | 53 500 | 53 500 | 117 900 | 53 500 | 117 900 | 53 500 | 117 900 |
| | | 26.0 | 85' 4" | 48 300 | 48 300 | 106 400 | 48 300 | 106 400 | 48 300 | 106 400 |
| | | 28.0 | 91' 10" | 44 000 | 44 000 | 97 000 | 44 000 | 97 000 | 44 000 | 97 000 |
| | | 30.0 | 98' 5" | 40 300 | 40 300 | 88 840 | 40 300 | 88 840 | 40 300 | 88 840 |
| | | 32.0 | 105' 0" | 37 100 | 37 100 | 81 790 | 37 100 | 81 790 | 37 100 | 81 790 |
| | | 34.0 | 111' 7" | 34 300 | 34 300 | 75 610 | 34 300 | 75 610 | 34 300 | 75 610 |
| 36.0 | 118' 1" | 31 800 | 31 800 | 70 100 | 31 800 | 70 100 | 31 800 | 70 100 | | |
| 38.0 | 124' 8" | 29 700 | 29 700 | 65 470 | 29 700 | 65 470 | 29 700 | 65 470 | | |
| 40.0 | 131' 3" | 27 800 | 27 800 | 61 280 | 27 800 | 61 280 | 27 800 | 61 280 | | |
| 42.0 | 137' 10" | 26 100 | 26 100 | 57 530 | 26 100 | 57 530 | 26 100 | 57 530 | | |
| 44.0 | 144' 4" | 24 600 | 24 600 | 54 230 | 24 600 | 54 230 | 24 600 | 54 230 | | |
| 46.0 | 150' 11" | 23 200 | 23 200 | 51 140 | 23 200 | 51 140 | 23 200 | 51 140 | | |
| 48.0 | 157' 6" | 22 000 | 22 000 | 48 500 | 22 000 | 48 500 | 22 000 | 48 500 | | |

| Mast (CB) length | Boom length | Working radius | | Rated load | | | | | | |
|------------------|------------------|----------------|---------|------------|---------|-----------|---------|-------------|---------|---------|
| | | | | JIS rating | | BS rating | | PCSA rating | | |
| | | | | m | ft in | kg | kg | lb | kg | lb |
| 30.0 (98'5") | 57.0 (187'0") | 12.0 | 39' 4" | 100 000 | 100 000 | 220 400 | 100 000 | 220 400 | 100 000 | 220 400 |
| | | 14.0 | 45' 11" | 100 000 | 100 000 | 220 400 | 100 000 | 220 400 | 100 000 | 220 400 |
| | | 16.0 | 52' 6" | 90 200 | 90 200 | 198 800 | 90 200 | 198 800 | 90 200 | 198 800 |
| | | 18.0 | 59' 1" | 77 300 | 77 300 | 170 400 | 77 300 | 170 400 | 77 300 | 170 400 |
| | | 20.0 | | | | | | | | |

| Mast (CB) length | Boom length | Working radius | | Rated load | | | | | | |
|-------------------|-------------|----------------|----------|------------|--------|-----------|--------|-------------|--------|---------|
| | | | | JIS rating | | BS rating | | PCSA rating | | |
| | | | | m | ft in | kg | kg | lb | kg | lb |
| 69.0 (226'5") | | 14.0 | 45' 11" | 86 900 | 86 900 | 191 500 | 86 900 | 191 500 | 86 900 | 191 500 |
| | | 16.0 | 52' 6" | 86 900 | 86 900 | 191 500 | 86 900 | 191 500 | 86 900 | 191 500 |
| | | 18.0 | 59' 1" | 77 100 | 77 100 | 169 900 | 77 100 | 169 900 | 77 100 | 169 900 |
| | | 20.0 | 65' 7" | 67 200 | 67 200 | 148 100 | 67 200 | 148 100 | 67 200 | 148 100 |
| | | 22.0 | 72' 2" | 59 300 | 59 300 | 130 700 | 59 300 | 130 700 | 59 300 | 130 700 |
| | | 24.0 | 78' 9" | 52 900 | 52 900 | 116 600 | 52 900 | 116 600 | 52 900 | 116 600 |
| | | 26.0 | 85' 4" | 47 600 | 47 600 | 104 900 | 47 600 | 104 900 | 47 600 | 104 900 |
| | | 28.0 | 91' 10" | 43 200 | 43 200 | 95 230 | 43 200 | 95 230 | 43 200 | 95 230 |
| | | 30.0 | 98' 5" | 39 500 | 39 500 | 87 080 | 39 500 | 87 080 | 39 500 | 87 080 |
| | | 32.0 | 105' 0" | 36 200 | 36 200 | 79 800 | 36 200 | 79 800 | 36 200 | 79 800 |
| | | 34.0 | 111' 7" | 33 400 | 33 400 | 73 630 | 33 400 | 73 630 | 33 400 | 73 630 |
| | | 36.0 | 118' 1" | 30 900 | 30 900 | 68 120 | 30 900 | 68 120 | 30 900 | 68 120 |
| | | 38.0 | 124' 8" | 28 800 | 28 800 | 63 490 | 28 800 | 63 490 | 28 800 | 63 490 |
| | | 40.0 | 131' 3" | 26 800 | 26 800 | 59 080 | 26 800 | 59 080 | 26 800 | 59 080 |
| | | 42.0 | 137' 10" | 25 100 | 25 100 | 55 330 | 25 100 | 55 330 | 25 100 | 55 330 |
| | | 44.0 | 144' 4" | 23 500 | 23 500 | 51 800 | 23 500 | 51 800 | 23 500 | 51 800 |
| | | 46.0 | 150' 11" | 22 100 | 22 100 | 48 720 | 22 100 | 48 720 | 22 100 | 48 720 |
| | | 48.0 | 157' 6" | 20 800 | 20 800 | 45 850 | 20 800 | 45 850 | 20 800 | 45 850 |
| | | 50.0 | 164' 1" | 19 700 | 19 700 | 43 430 | 19 700 | 43 430 | 19 700 | 43 430 |
| | | 52.0 | 170' 7" | 18 600 | 18 600 | 41 000 | 18 600 | 41 000 | 18 600 | 41 000 |
| | | 54.0 | 177' 2" | 17 600 | 17 600 | 38 800 | 17 600 | 38 800 | 17 600 | 38 800 |
| | | 56.0 | 183' 9" | 16 700 | 16 700 | 36 810 | 16 700 | 36 810 | 16 700 | 36 810 |
| | | 58.0 | 190' 3" | 15 900 | 15 900 | 35 050 | 15 900 | 35 050 | 15 900 | 35 050 |
| | | 60.0 | 196' 10" | 15 100 | 15 100 | 33 280 | 15 100 | 33 280 | 15 100 | 33 280 |
| 39.0 (127'11") | | 16.0 | 52' 6" | 81 700 | 81 700 | 180 100 | 81 700 | 180 100 | 81 700 | 180 100 |
| | | 18.0 | 59' 1" | 76 900 | 76 900 | 169 500 | 76 900 | 169 500 | 76 900 | 169 500 |
| | | 20.0 | 65' 7" | 66 900 | 66 900 | 147 400 | 66 900 | 147 400 | 66 900 | 147 400 |
| | | 22.0 | 72' 2" | 59 000 | 59 000 | 130 000 | 59 000 | 130 000 | 59 000 | 130 000 |
| | | 24.0 | 78' 9" | 52 700 | 52 700 | 116 100 | 52 700 | 116 100 | 52 700 | 116 100 |
| | | 26.0 | 85' 4" | 47 400 | 47 400 | 104 400 | 47 400 | 104 400 | 47 400 | 104 400 |
| | | 28.0 | 91' 10" | 43 000 | 43 000 | 94 790 | 43 000 | 94 790 | 43 000 | 94 790 |
| | | 30.0 | 98' 5" | 39 200 | 39 200 | 86 410 | 39 200 | 86 410 | 39 200 | 86 410 |
| | | 32.0 | 105' 0" | 36 000 | 36 000 | 79 360 | 36 000 | 79 360 | 36 000 | 79 360 |
| | | 34.0 | 111' 7" | 33 200 | 33 200 | 73 190 | 33 200 | 73 190 | 33 200 | 73 190 |
| | | 36.0 | 118' 1" | 30 700 | 30 700 | 67 680 | 30 700 | 67 680 | 30 700 | 67 680 |
| | | 38.0 | 124' 8" | 28 500 | 28 500 | 62 830 | 28 500 | 62 830 | 28 500 | 62 830 |
| | | 40.0 | 131' 3" | 26 600 | 26 600 | 58 640 | 26 600 | 58 640 | 26 600 | 58 640 |
| | | 42.0 | 137' 10" | 24 800 | 24 800 | 54 670 | 24 800 | 54 670 | 24 800 | 54 670 |
| | | 44.0 | 144' 4" | 23 300 | 23 300 | 51 360 | 23 300 | 51 360 | 23 300 | 51 360 |
| | | 46.0 | 150' 11" | 21 800 | 21 800 | 48 050 | 21 800 | 48 050 | 21 800 | 48 050 |
| | | 48.0 | 157' 6" | 20 600 | 20 600 | 45 410 | 20 600 | 45 410 | 20 600 | 45 410 |
| | | 50.0 | 164' 1" | 19 400 | 19 400 | 42 760 | 19 400 | 42 760 | 19 400 | 42 760 |
| | | 52.0 | 170' 7" | 18 300 | 18 300 | 40 340 | 18 300 | 40 340 | 18 300 | 40 340 |
| | | 54.0 | 177' 2" | 17 300 | 17 300 | 38 130 | 17 300 | 38 130 | 17 300 | 38 130 |
| | | 56.0 | 183' 9" | 16 400 | 16 400 | 36 150 | 16 400 | 36 150 | 16 400 | 36 150 |
| | | 58.0 | 190' 3" | 15 600 | 15 600 | 34 390 | 15 600 | 34 390 | 15 600 | 34 390 |
| | | 60.0 | 196' 10" | 14 800 | 14 800 | 32 620 | 14 800 | 32 620 | 14 800 | 32 620 |
| | | 62.0 | 203' 5" | 14 100 | 14 100 | 31 080 | 14 100 | 31 080 | 14 100 | 31 080 |
| 64.0 | 210' 0" | 13 500 | 13 500 | 29 760 | 13 500 | 29 760 | 13 500 | 29 760 | | |
| 75.0 (246'1") | | 16.0 | 52' 6" | 76 700 | 76 700 | 169 000 | 76 700 | 169 000 | 76 700 | 169 000 |
| | | 18.0 | 59' 1" | 76 600 | 76 600 | 168 800 | 76 600 | 168 800 | 76 600 | 168 800 |
| | | 20.0 | 65' 7" | 67 000 | 67 000 | 147 700 | 67 000 | 147 700 | 67 000 | 147 700 |
| | | 22.0 | 72' 2" | 59 100 | 59 100 | 130 200 | 59 100 | 130 200 | 59 100 | 130 200 |
| | | 24.0 | 78' 9" | 52 700 | 52 700 | 116 100 | 52 700 | 116 100 | 52 700 | 116 100 |
| | | 26.0 | 85' 4" | 47 500 | 47 500 | 104 700 | 47 500 | 104 700 | 47 500 | 104 700 |
| | | 28.0 | 91' 10" | 43 000 | 43 000 | 94 790 | 43 000 | 94 790 | 43 000 | 94 790 |
| | | 30.0 | 98' 5" | 39 300 | 39 300 | 86 640 | 39 300 | 86 640 | 39 300 | 86 640 |
| | | 32.0 | 105' 0" | 36 000 | 36 000 | 79 360 | 36 000 | 79 360 | 36 000 | 79 360 |
| | | 34.0 | 111' 7" | 33 200 | 33 200 | 73 190 | 33 200 | 73 190 | 33 200 | 73 190 |
| | | 36.0 | 118' 1" | 30 700 | 30 700 | 67 680 | 30 700 | 67 680 | 30 700 | 67 680 |
| | | 38.0 | 124' 8" | 28 500 | 28 500 | 62 830 | 28 500 | 62 830 | 28 500 | 62 830 |
| | | 40.0 | 131' 3" | 26 600 | 26 600 | 58 640 | 26 600 | 58 640 | 26 600 | 58 640 |
| | | 42.0 | 137' 10" | 24 800 | 24 800 | 54 670 | 24 800 | 54 670 | 24 800 | 54 670 |
| | | 44.0 | 144' 4" | 23 300 | 23 300 | 51 360 | 23 300 | 51 360 | 23 300 | 51 360 |
| | | 46.0 | 150' 11" | 21 900 | 21 900 | 48 280 | 21 900 | 48 280 | 21 900 | 48 280 |
| | | 48.0 | 157' 6" | 20 600 | 20 600 | 45 410 | 20 600 | 45 410 | 20 600 | 45 410 |
| | | 50.0 | 164' 1" | 19 400 | 19 400 | 42 760 | 19 400 | 42 760 | 19 400 | 42 760 |
| | | 52.0 | 170' 7" | 18 300 | 18 300 | 40 340 | 18 300 | 40 340 | 18 300 | 40 340 |
| | | 54.0 | 177' 2" | 17 300 | 17 300 | 38 130 | 17 300 | 38 130 | 17 300 | 38 130 |
| | | 56.0 | 183' 9" | 16 400 | 16 400 | 36 150 | 16 400 | 36 150 | 16 400 | 36 150 |
| | | 58.0 | 190' 3" | 15 600 | 15 600 | 34 390 | 15 600 | 34 390 | 15 600 | 34 390 |
| | | 60.0 | 196' 10" | 14 800 | 14 800 | 32 620 | 14 800 | 32 620 | 14 800 | 32 620 |
| | | 62.0 | 203' 5" | 14 100 | 14 100 | 31 080 | 14 100 | 31 080 | 14 100 | 31 080 |
| 64.0 | 210' 0" | 13 400 | 13 400 | 29 540 | 13 400 | 29 540 | 13 400 | 29 540 | | |
| 66.0 | 216' 6" | 12 800 | 12 800 | 28 210 | 12 800 | 28 210 | 12 800 | 28 210 | | |

| Mast (CB) length | Boom length | Working radius | | Rated load | | | | | | |
|-------------------|-------------|----------------|----------|------------|--------|-----------|--------|-------------|--------|---------|
| | | | | JIS rating | | BS rating | | PCSA rating | | |
| | | | | m | ft in | kg | kg | lb | kg | lb |
| 78.0 (255'11") | | 16.0 | 52' 6" | 71 600 | 71 600 | 157 800 | 71 600 | 157 800 | 71 600 | 157 800 |
| | | 18.0 | 59' 1" | 71 600 | 71 600 | 157 800 | 71 600 | 157 800 | 71 600 | 157 800 |
| | | 20.0 | 65' 7" | 66 600 | 66 600 | 146 800 | 66 600 | 146 800 | 66 600 | 146 800 |
| | | 22.0 | 72' 2" | 58 800 | 58 800 | 129 600 | 58 800 | 129 600 | 58 800 | 129 600 |
| | | 24.0 | 78' 9" | 52 400 | 52 400 | 115 500 | 52 400 | 115 500 | 52 400 | 115 500 |
| | | 26.0 | 85' 4" | 47 100 | 47 100 | 103 800 | 47 100 | 103 800 | 47 100 | 103 800 |
| | | 28.0 | 91' 10" | 42 700 | 42 700 | 94 130 | 42 700 | 94 130 | 42 700 | 94 130 |
| | | 30.0 | 98' 5" | 38 900 | 38 900 | 85 750 | 38 900 | 85 750 | 38 900 | 85 750 |
| | | 32.0 | 105' 0" | 35 700 | 35 700 | 78 700 | 35 700 | 78 700 | 35 700 | 78 700 |
| | | 34.0 | 111' 7" | 32 900 | 32 900 | 72 530 | 32 900 | 72 530 | 32 900 | 72 530 |
| | | 36.0 | 118' 1" | 30 400 | 30 400 | 67 010 | 30 400 | 67 010 | 30 400 | 67 010 |
| | | 38.0 | 124' 8" | 28 200 | 28 200 | 62 160 | 28 200 | 62 160 | 28 200 | 62 160 |
| | | 40.0 | 131' 3" | 26 200 | 26 200 | 57 760 | 26 200 | 57 760 | 26 200 | 57 760 |
| | | 42.0 | 137' 10" | 24 500 | 24 500 | 54 010 | 24 500 | 54 010 | 24 500 | 54 010 |
| | | 44.0 | 144' 4" | 22 900 | 22 900 | 50 480 | 22 900 | 50 480 | 22 900 | 50 480 |
| | | 46.0 | 150' 11" | 21 500 | 21 500 | 47 390 | 21 500 | 47 390 | 21 500 | 47 390 |
| | | 48.0 | 157' 6" | 20 200 | 20 200 | 44 530 | 20 200 | 44 530 | 20 200 | 44 530 |
| | | 50.0 | 164' 1" | 19 000 | 19 000 | 41 880 | 19 000 | 41 880 | 19 000 | 41 880 |
| | | 52.0 | 170' 7" | 17 900 | 17 900 | 39 460 | 17 900 | 39 460 | 17 900 | 39 460 |
| | | 54.0 | 177' 2" | 16 900 | 16 900 | 37 250 | 16 900 | 37 250 | 16 900 | 37 250 |
| | | 56.0 | 183' 9" | 16 000 | 16 000 | 35 270 | 16 000 | 35 270 | 16 000 | 35 270 |
| | | 58.0 | 190' 3" | 15 200 | 15 200 | 33 500 | 15 200 | 33 500 | 15 200 | 33 500 |
| | | 60.0 | 196' 10" | 14 400 | 14 400 | 31 740 | 14 400 | 31 740 | 14 400 | 31 740 |
| | | 62.0 | 203' 5" | 13 700 | 13 700 | 30 200 | 13 700 | 30 200 | 13 700 | 30 200 |
| 64.0 | 210' 0" | 13 000 | 13 000 | 28 650 | 13 000 | 28 650 | 13 000 | 28 650 | | |
| 66.0 | 216' 6" | 12 400 | 12 400 | 27 330 | 12 400 | 27 330 | 12 400 | 27 330 | | |
| 68.0 | 223' 1" | 11 800 | 11 800 | 26 010 | 11 800 | 26 010 | 11 800 | 26 010 | | |
| 39.0 (127'11") | | 16.0 | 52' 6" | 67 200 | 67 200 | 148 100 | 67 200 | 148 100 | 67 200 | 148 100 |
| | | 18.0 | 59' 1" | 67 200 | 67 200 | 148 100 | 67 200 | 148 100 | 67 200 | 148 100 |
| | | 20.0 | 65' 7" | 66 400 | 66 400 | 146 300 | 66 400 | 146 300 | 66 400 | 146 300 |
| | | 22.0 | 72' 2" | 58 500 | 58 500 | 128 900 | 58 500 | 128 900 | 58 500 | 128 900 |
| | | 24.0 | 78' 9" | 52 100 | 52 100 | 114 800 | 52 100 | 114 800 | 52 100 | 114 800 |
| | | 26.0 | 85' 4" | 46 800 | 46 800 | 103 100 | 46 800 | 103 100 | 46 800 | 103 100 |
| | | 28.0 | 91' 10" | 42 400 | 42 400 | 93 470 | 42 400 | 93 470 | 42 400 | 93 470 |
| | | 30.0 | 98' 5" | 38 700 | 38 700 | 85 310 | 38 700 | 85 310 | 38 700 | 85 310 |
| | | 32.0 | 105' 0" | 35 400 | 35 400 | 78 040 | 35 400 | 78 040 | 35 400 | 78 040 |
| | | 34.0 | 111' 7" | 32 600 | 32 600 | 71 860 | 32 600 | 71 860 | 32 600 | 71 860 |
| | | 36.0 | 118' 1" | 30 100 | 30 100 | 66 350 | 30 100 | 66 350 | 30 100 | 66 350 |
| | | 38.0 | 124' 8" | 27 900 | 27 900 | 61 500 | 27 900 | 61 500 | 27 900 | 61 500 |
| | | 40.0 | 131' 3" | 26 000 | 26 000 | 57 310 | | | | |

| Mast (CB) length | Boom length | Working radius | | Rated load | | | | | | |
|------------------|---------------|----------------|---------------|------------|-----------|---------|-------------|---------|--------|---------|
| | | | | JIS rating | BS rating | | PCSA rating | | | |
| | | | | | kg | kg | lb | lb | | |
| m (ft in) | m (ft in) | m | ft in | kg | kg | lb | lb | | | |
| 87.0 (285'5") | 87.0 (285'5") | 18.0 | 59' 1" | 59 200 | 59 200 | 130 500 | 59 200 | 130 500 | | |
| | | 20.0 | 65' 7" | 59 200 | 59 200 | 130 500 | 59 200 | 130 500 | | |
| | | 22.0 | 72' 2" | 58 300 | 58 300 | 128 500 | 58 300 | 128 500 | | |
| | | 24.0 | 78' 9" | 51 900 | 51 900 | 114 400 | 51 900 | 114 400 | | |
| | | 26.0 | 85' 4" | 46 600 | 46 600 | 102 700 | 46 600 | 102 700 | | |
| | | 28.0 | 91'10" | 42 200 | 42 200 | 93 030 | 42 200 | 93 030 | | |
| | | 30.0 | 98' 5" | 38 400 | 38 400 | 84 650 | 38 400 | 84 650 | | |
| | | 32.0 | 105' 0" | 35 200 | 35 200 | 77 600 | 35 200 | 77 600 | | |
| | | 34.0 | 111' 7" | 32 400 | 32 400 | 71 420 | 32 400 | 71 420 | | |
| | | 36.0 | 118' 1" | 29 900 | 29 900 | 65 910 | 29 900 | 65 910 | | |
| | | 38.0 | 124' 8" | 27 700 | 27 700 | 61 060 | 27 700 | 61 060 | | |
| | | 40.0 | 131' 3" | 25 700 | 25 700 | 56 650 | 25 700 | 56 650 | | |
| | | 42.0 | 137'10" | 24 000 | 24 000 | 52 910 | 24 000 | 52 910 | | |
| | | 44.0 | 144' 4" | 22 400 | 22 400 | 49 380 | 22 400 | 49 380 | | |
| | | 46.0 | 150'11" | 21 000 | 21 000 | 46 290 | 21 000 | 46 290 | | |
| | | 48.0 | 157' 6" | 19 700 | 19 700 | 43 430 | 19 700 | 43 430 | | |
| | | 50.0 | 164' 1" | 18 500 | 18 500 | 40 780 | 18 500 | 40 780 | | |
| | | 52.0 | 170' 7" | 17 400 | 17 400 | 38 350 | 17 400 | 38 350 | | |
| | | 54.0 | 177' 2" | 16 400 | 16 400 | 36 150 | 16 400 | 36 150 | | |
| | | 56.0 | 183' 9" | 15 500 | 15 500 | 34 170 | 15 500 | 34 170 | | |
| | | 58.0 | 190' 3" | 14 600 | 14 600 | 32 180 | 14 600 | 32 180 | | |
| | | 60.0 | 196'10" | 13 800 | 13 800 | 30 420 | 13 800 | 30 420 | | |
| | | 62.0 | 203' 5" | 13 100 | 13 100 | 28 880 | 13 100 | 28 880 | | |
| | | 64.0 | 210' 0" | 12 400 | 12 400 | 27 330 | 12 400 | 27 330 | | |
| | | 66.0 | 216' 6" | 11 800 | 11 800 | 26 010 | 11 800 | 26 010 | | |
| | | 68.0 | 223' 1" | 11 200 | 11 200 | 24 690 | 11 200 | 24 690 | | |
| | | 70.0 | 229' 8" | 10 600 | 10 600 | 23 360 | 10 600 | 23 360 | | |
| | | 72.0 | 236' 3" | 10 100 | 10 100 | 22 260 | 10 100 | 22 260 | | |
| | | 74.0 | 242' 9" | 9 600 | 9 600 | 21 160 | 9 600 | 21 160 | | |
| | | 76.0 | 249' 4" | 9 200 | 9 200 | 20 280 | 9 200 | 20 280 | | |
| | | 90.0 (295'3") | 90.0 (295'3") | 18.0 | 59' 1" | 55 500 | 55 000 | 121 200 | 55 500 | 122 300 |
| | | | | 20.0 | 65' 7" | 55 500 | 55 000 | 121 200 | 55 500 | 122 300 |
| | | | | 22.0 | 72' 2" | 55 500 | 55 000 | 121 200 | 55 500 | 122 300 |
| 24.0 | 78' 9" | | | 51 600 | 51 600 | 113 700 | 51 600 | 113 700 | | |
| 26.0 | 85' 4" | | | 46 300 | 46 300 | 102 000 | 46 300 | 102 000 | | |
| 28.0 | 91'10" | | | 41 900 | 41 900 | 92 370 | 41 900 | 92 370 | | |
| 30.0 | 98' 5" | | | 38 100 | 38 100 | 83 990 | 38 100 | 83 990 | | |
| 32.0 | 105' 0" | | | 34 900 | 34 900 | 76 940 | 34 900 | 76 940 | | |
| 34.0 | 111' 7" | | | 32 100 | 32 100 | 70 760 | 32 100 | 70 760 | | |
| 36.0 | 118' 1" | | | 29 600 | 29 600 | 65 250 | 29 600 | 65 250 | | |
| 38.0 | 124' 8" | | | 27 400 | 27 400 | 60 400 | 27 400 | 60 400 | | |
| 40.0 | 131' 3" | | | 25 400 | 25 400 | 55 990 | 25 400 | 55 990 | | |
| 42.0 | 137'10" | | | 23 700 | 23 700 | 52 240 | 23 700 | 52 240 | | |
| 44.0 | 144' 4" | | | 22 100 | 22 100 | 48 720 | 22 100 | 48 720 | | |
| 46.0 | 150'11" | | | 20 600 | 20 600 | 45 410 | 20 600 | 45 410 | | |
| 48.0 | 157' 6" | | | 19 300 | 19 300 | 42 540 | 19 300 | 42 540 | | |
| 50.0 | 164' 1" | | | 18 200 | 18 200 | 40 120 | 18 200 | 40 120 | | |
| 52.0 | 170' 7" | | | 17 100 | 17 100 | 37 690 | 17 100 | 37 690 | | |
| 54.0 | 177' 2" | | | 16 100 | 16 100 | 35 490 | 16 100 | 35 490 | | |
| 56.0 | 183' 9" | | | 15 100 | 15 100 | 33 280 | 15 100 | 33 280 | | |
| 58.0 | 190' 3" | | | 14 300 | 14 300 | 31 520 | 14 300 | 31 520 | | |
| 60.0 | 196'10" | | | 13 500 | 13 500 | 29 760 | 13 500 | 29 760 | | |
| 62.0 | 203' 5" | | | 12 800 | 12 800 | 28 210 | 12 800 | 28 210 | | |
| 64.0 | 210' 0" | | | 12 100 | 12 100 | 26 670 | 12 100 | 26 670 | | |
| 66.0 | 216' 6" | | | 11 400 | 11 400 | 25 130 | 11 400 | 25 130 | | |
| 68.0 | 223' 1" | | | 10 800 | 10 800 | 23 800 | 10 800 | 23 800 | | |
| 70.0 | 229' 8" | | | 10 300 | 10 300 | 22 700 | 10 300 | 22 700 | | |
| 72.0 | 236' 3" | | | 9 800 | 9 800 | 21 600 | 9 800 | 21 600 | | |
| 74.0 | 242' 9" | | | 9 300 | 9 300 | 20 500 | 9 300 | 20 500 | | |
| 76.0 | 249' 4" | | | 8 800 | 8 800 | 19 400 | 8 800 | 19 400 | | |
| 78.0 | 255'11" | | | 8 400 | 8 400 | 18 510 | 8 400 | 18 510 | | |
| 93.0 (305'1") | 93.0 (305'1") | | | 18.0 | 59' 1" | 52 100 | 51 000 | 112 400 | 52 100 | 114 800 |
| | | | | 20.0 | 65' 7" | 52 100 | 51 000 | 112 400 | 52 100 | 114 800 |
| | | 22.0 | 72' 2" | 51 900 | 51 000 | 112 400 | 51 900 | 114 400 | | |
| | | 24.0 | 78' 9" | 50 400 | 50 400 | 111 100 | 50 400 | 111 100 | | |
| | | 26.0 | 85' 4" | 46 300 | 46 300 | 102 000 | 46 300 | 102 000 | | |
| | | 28.0 | 91'10" | 41 900 | 41 900 | 92 370 | 41 900 | 92 370 | | |
| | | 30.0 | 98' 5" | 38 100 | 38 100 | 83 990 | 38 100 | 83 990 | | |
| | | 32.0 | 105' 0" | 34 800 | 34 800 | 76 710 | 34 800 | 76 710 | | |
| | | 34.0 | 111' 7" | 32 000 | 32 000 | 70 540 | 32 000 | 70 540 | | |
| | | 36.0 | 118' 1" | 29 500 | 29 500 | 65 030 | 29 500 | 65 030 | | |
| | | 38.0 | 124' 8" | 27 300 | 27 300 | 60 180 | 27 300 | 60 180 | | |
| | | 40.0 | 131' 3" | 25 400 | 25 400 | 55 990 | 25 400 | 55 990 | | |
| | | 42.0 | 137'10" | 23 600 | 23 600 | 52 020 | 23 600 | 52 020 | | |
| | | 44.0 | 144' 4" | 22 000 | 22 000 | 48 500 | 22 000 | 48 500 | | |
| | | 46.0 | 150'11" | 20 600 | 20 600 | 45 410 | 20 600 | 45 410 | | |
| | | 48.0 | 157' 6" | 19 300 | 19 300 | 42 540 | 19 300 | 42 540 | | |
| | | 50.0 | 164' 1" | 18 100 | 18 100 | 39 900 | 18 100 | 39 900 | | |
| | | 52.0 | 170' 7" | 17 000 | 17 000 | 37 470 | 17 000 | 37 470 | | |
| | | 54.0 | 177' 2" | 16 000 | 16 000 | 35 270 | 16 000 | 35 270 | | |
| | | 56.0 | 183' 9" | 15 100 | 15 100 | 33 280 | 15 100 | 33 280 | | |
| | | 58.0 | 190' 3" | 14 200 | 14 200 | 31 300 | 14 200 | 31 300 | | |
| | | 60.0 | 196'10" | 13 400 | 13 400 | 29 540 | 13 400 | 29 540 | | |
| | | 62.0 | 203' 5" | 12 700 | 12 700 | 27 990 | 12 700 | 27 990 | | |
| | | 64.0 | 210' 0" | 12 000 | 12 000 | 26 450 | 12 000 | 26 450 | | |
| | | 66.0 | 216' 6" | 11 300 | 11 300 | 24 910 | 11 300 | 24 910 | | |
| | | 68.0 | 223' 1" | 10 700 | 10 700 | 23 580 | 10 700 | 23 580 | | |
| | | 70.0 | 229' 8" | 10 200 | 10 200 | 22 480 | 10 200 | 22 480 | | |
| | | 72.0 | 236' 3" | 9 600 | 9 600 | 21 160 | 9 600 | 21 160 | | |
| | | 74.0 | 242' 9" | 9 100 | 9 100 | 20 060 | 9 100 | 20 060 | | |
| | | 76.0 | 249' 4" | 8 700 | 8 700 | 19 170 | 8 700 | 19 170 | | |
| | | 78.0 | 255'11" | 8 200 | 8 200 | 18 070 | 8 200 | 18 070 | | |
| | | 80.0 | 262' 6" | 7 800 | 7 800 | 17 190 | 7 800 | 17 190 | | |
| | | 82.0 | 269' 0" | 7 300 | 7 300 | 16 090 | 7 300 | 16 090 | | |

| Mast (CB) length | Boom length | Working radius | | Rated load | | | | |
|------------------|---------------|----------------|---------|------------|-----------|---------|-------------|---------|
| | | | | JIS rating | BS rating | | PCSA rating | |
| | | | | | kg | kg | lb | lb |
| m (ft in) | m (ft in) | m | ft in | kg | kg | lb | lb | |
| 87.0 (285'5") | 87.0 (285'5") | 20.0 | 65' 7" | 47 900 | 46 500 | 102 500 | 47 900 | 105 500 |
| | | 22.0 | 72' 2" | 46 900 | 46 500 | 102 500 | 46 900 | 103 300 |
| | | 24.0 | 78' 9" | 45 800 | 45 800 | 100 900 | 45 800 | 100 900 |
| | | 26.0 | 85' 4" | 44 600 | 44 600 | 98 320 | 44 600 | 98 320 |
| | | 28.0 | 91'10" | 41 600 | 41 600 | 91 710 | 41 600 | 91 710 |
| | | 30.0 | 98' 5" | 37 900 | 37 900 | 83 550 | 37 900 | 83 550 |
| | | 32.0 | 105' 0" | 34 600 | 34 600 | 76 280 | 34 600 | 76 270 |
| | | 34.0 | 111' 7" | 31 800 | 31 800 | 70 100 | 31 800 | 70 100 |
| | | 36.0 | 118' 1" | 29 300 | 29 300 | 64 590 | 29 300 | 64 590 |
| | | 38.0 | 124' 8" | 27 100 | 27 100 | 59 740 | 27 100 | 59 740 |
| | | 40.0 | 131' 3" | 25 100 | 25 100 | 55 330 | 25 100 | 55 330 |
| | | 42.0 | 137'10" | 23 400 | 23 400 | 51 580 | 23 400 | 51 580 |
| | | 44.0 | 144' 4" | 21 800 | 21 800 | 48 060 | 21 800 | 48 050 |
| | | 46.0 | 150'11" | 20 300 | 20 300 | 44 750 | 20 300 | 44 750 |
| | | 48.0 | 157' 6" | 19 000 | 19 000 | 41 880 | 19 000 | 41 880 |
| | | 50.0 | 164' 1" | 17 800 | 17 800 | 39 240 | 17 800 | 39 240 |
| | | 52.0 | 170' 7" | 16 700 | 16 700 | 36 810 | 16 700 | 36 810 |
| | | 54.0 | 177' 2" | 15 700 | 15 700 | 34 610 | 15 700 | 34 610 |
| | | 56.0 | 183' 9" | 14 800 | 14 800 | 32 620 | 14 800 | 32 620 |
| | | 58.0 | 190' 3" | 13 900 | 13 900 | 30 640 | 13 900 | 30 640 |
| | | 60.0 | 196'10" | 13 100 | 13 100 | 28 880 | 13 100 | 28 880 |
| | | 62.0 | 203' 5" | 12 400 | 12 400 | 27 330 | 12 400 | 27 330 |
| | | 64.0 | 210' 0" | 11 700 | 11 700 | 25 790 | 11 700 | 25 790 |
| | | 66.0 | 216' 6" | 11 100 | 11 100 | 24 470 | 11 100 | 24 470 |
| | | 68.0 | 223' 1" | 10 500 | 10 500 | 23 140 | 10 500 | 23 140 |
| | | 70.0 | 229' 8" | 9 900 | 9 900 | 21 820 | 9 900 | 21 820 |
| | | 72.0 | 236' 3" | 9 400 | 9 400 | 20 720 | 9 400 | 20 720 |
| | | 74.0 | 242' 9" | 8 900 | 8 900 | 19 620 | 8 900 | 19 620 |
| | | 76.0 | 249' 4" | 8 400 | 8 400 | 18 510 | 8 400 | 18 510 |
| | | 78.0 | 255'11" | 7 900 | 7 900 | 17 410 | 7 900 | 17 410 |
| | | 80.0 | 262' 6" | 7 400 | 7 400 | 16 310 | 7 400 | 16 310 |
| | | 82.0 | 269' 0" | 6 900 | 6 900 | 15 210 | 6 900 | 15 210 |
| | | 84.0 | 275' 7" | 6 500 | 6 500 | 14 330 | 6 500 | 14 320 |
| 90.0 (295'3") | 90.0 (295'3") | 20.0 | 65' 7" | 44 900 | 43 300 | 95 460 | 44 900 | 98 980 |
| | | 22.0 | 72' 2" | 43 300 | 43 300 | 95 460 | 43 300 | 95 450 |
| | | 24.0 | 78' 9" | 42 200 | 42 200 | 93 030 | 42 200 | 93 030 |
| | | 26.0 | 85' 4" | 41 400 | 41 400 | 91 270 | 41 400 | 91 260 |
| | | 28.0 | 91'10" | 40 400 | 40 400 | 89 060 | 40 | |

Main Boom & Mast (CB) Construction

Series 1

Main Boom Construction

| | Mast (CB) length | Boom length | Lower boom 7.5 m (24'7") | Upper boom 7.5 m (24'7") | Upper boom 10.5 m (34'5") | Boom insert 3.0 m (9'10") | Boom insert 6.0 m (19'8") | Boom insert 9.0 m (29'6") | Boom insert 12.0 m (39'4") | Available hook | Number of rope reeving |
|--------------------|---------------------|--------------------|-----------------------------|-----------------------------|------------------------------|------------------------------|------------------------------|------------------------------|-------------------------------|--|---------------------------|
| Heavy-duty service | 24.0 m (78'9") | 36.0 m (118'1") | 1 | 1 | | 2 | 1 | 1 | | 200 000 kg (440 900 lb) capacity hook 100 000 kg (220 400 lb) capacity hook | 11 |
| | | 39.0 m (127'11") | 1 | 1 | | 1 | 2 | 1 | | | 10 |
| | | 42.0 m (137'10") | 1 | 1 | | 1 | 1 | 2 | | | 9 |
| | | 45.0 m (147'8") | 1 | 1 | | 2 | 1 | 2 | | | 8 |
| | | 48.0 m (157'6") | 1 | 1 | | 1 | 2 | 2 | | | 7 |
| | 30.0 m (98'5") | 51.0 m (167'4") | 1 | 1 | | 1 | 1 | 3 | | | 7 |
| | | 54.0 m (177'2") | 1 | 1 | | 2 | 1 | 3 | | | 7 |
| | | 57.0 m (187'0") | 1 | 1 | | 1 | 2 | 3 | | | 6 |
| | | 60.0 m (196'10") | 1 | 1 | | 1 | 1 | 4 | | | 5 |
| | | Light-duty service | 24.0 m (78'9") | 39.0 m (127'11") | 1 | | 1 | 2 | 1 | | 1 |
| 42.0 m (137'10") | 1 | | | | 1 | 1 | 2 | 1 | | 8 | |
| 45.0 m (147'8") | 1 | | | | 1 | 1 | 1 | 2 | | 8 | |
| 48.0 m (157'6") | 1 | | | | 1 | 1 | 1 | 1 | 1 | 8 | |
| 30.0 m (98'5") | 51.0 m (167'4") | | 1 | | 1 | 2 | 1 | 1 | 1 | 7 | |
| | 54.0 m (177'2") | | 1 | | 1 | 1 | 2 | 1 | 1 | 7 | |
| | 57.0 m (187'0") | | 1 | | 1 | 1 | 1 | 2 | 1 | 6 | |
| | 60.0 m (196'10") | | 1 | | 1 | 1 | 1 | 1 | 2 | 5 | |
| | 39.0 m (127'11") | | 63.0 m (206'8") | 1 | | 1 | 2 | 1 | 1 | 2 | 5 |
| 66.0 m (216'6") | | | 1 | | 1 | 1 | 2 | 1 | 2 | 5 | |
| 69.0 m (226'5") | | | 1 | | 1 | 1 | 1 | 2 | 2 | 4 | |
| 72.0 m (236'3") | | | 1 | | 1 | 1 | 1 | 1 | 3 | 4 | |
| 75.0 m (246'1") | | | 1 | | 1 | 2 | 1 | 1 | 3 | 4 | |
| 78.0 m (255'11") | | | 1 | | 1 | 1 | 2 | 1 | 3 | 4 | |
| 81.0 m (265'9") | | | 1 | | 1 | 1 | 1 | 2 | 3 | 3 | |
| 84.0 m (275'7") | | | 1 | | 1 | 1 | 1 | 1 | 4 | 3 | |
| 87.0 m (285'5") | | | 1 | | 1 | 2 | 1 | 1 | 4 | 3 | |
| 90.0 m (295'3") | | | 1 | | 1 | 1 | 2 | 1 | 4 | 3 | |
| 93.0 m (305'1") | 1 | | | 1 | 1 | 1 | 2 | 4 | 2 | | |
| 96.0 m (315'0") | 1 | | 1 | 1 | 1 | 1 | 5 | 2 | | | |
| 99.0 m (324'10") | 1 | | 1 | 2 | 1 | 1 | 5 | 2 | | | |

Mast (CB) Construction

| Mast (CB) length | Lower mast (CB) 10.5 m (34'5") | Upper mast (CB) 10.5 m (34'5") | Mast (CB) insert 3.0 m (9'10") | Mast (CB) insert 6.0 m (19'8") | Mast (CB) insert 9.0 m (29'6") |
|------------------|-----------------------------------|-----------------------------------|-----------------------------------|-----------------------------------|-----------------------------------|
| 24.0 m (78'9") | 1 | 1 | 1 | | |
| 30.0 m (98'5") | 1 | 1 | 1 | 1 | |
| 39.0 m (127'11") | 1 | 1 | 1 | 1 | 1 |

Series 2

Main Boom Construction

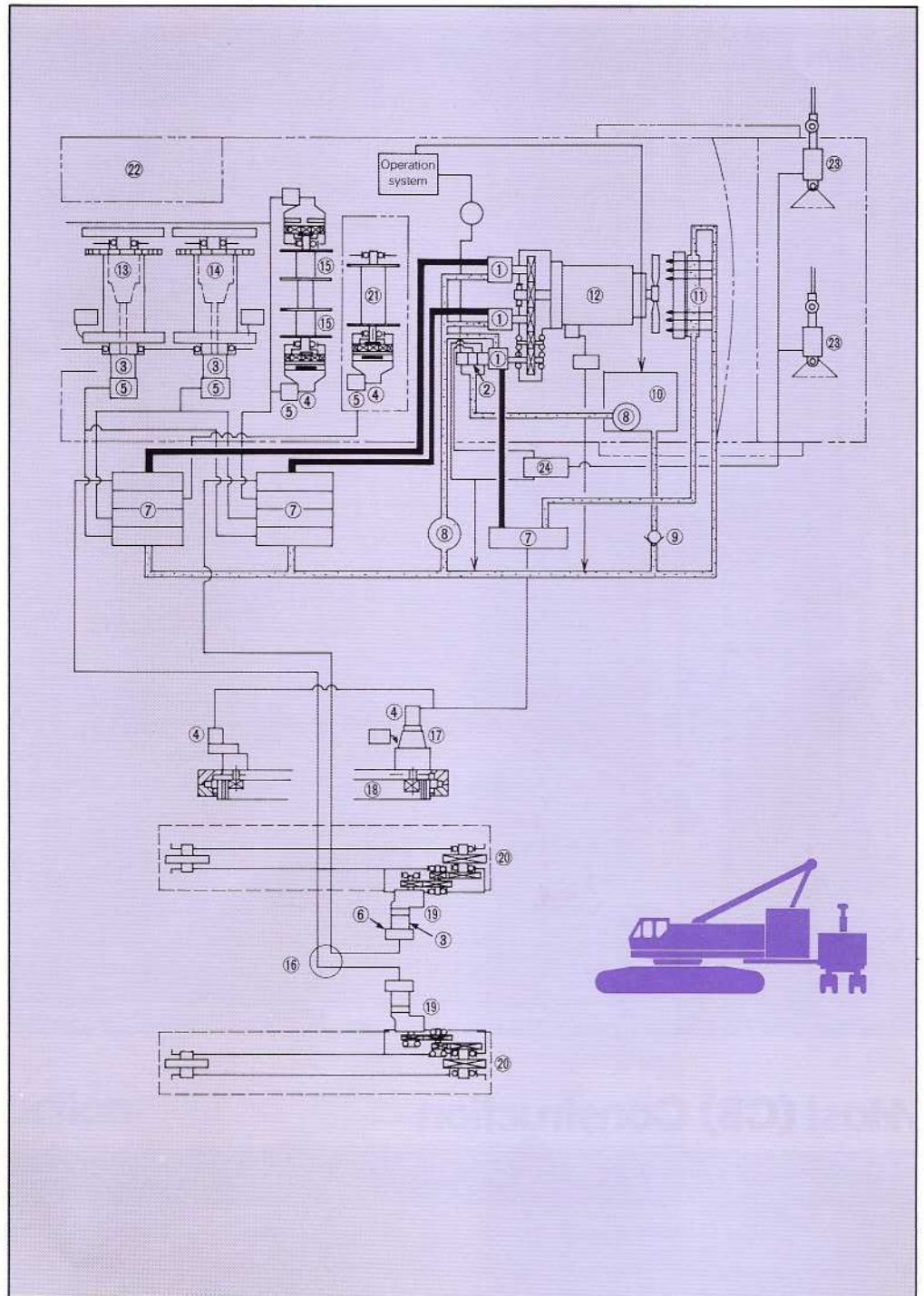
| | Mast (CB) length | Boom length | Lower boom 7.5 m (24'7") | Taper lower boom insert 7.5 m (24'7") | Upper boom 7.5 m (24'7") | Upper boom 10.5 m (34'5") | Taper upper boom insert 7.5 m (24'7") | Boom insert 3.0 m (9'10") | Boom insert 6.0 m (19'8") | Boom insert 9.0 m (29'6") | Boom insert 12.0 m (39'4") | Available hook | Number of rope reeving | |
|--------------------|---------------------|------------------|--------------------------------|--|--------------------------------|---------------------------------|--|---------------------------------|---------------------------------|---------------------------------|----------------------------------|--|---------------------------|----|
| Heavy-duty service | 24.0 m (78'9") | 36.0 m (118'1") | 1 | 1 | 1 | | 1 | | 1 | | | 200 000 kg (440 900 lb) capacity hook | 16 | |
| | | 39.0 m (127'11") | 1 | 1 | 1 | | 1 | 1 | | | | | 14 | |
| | | 42.0 m (137'10") | 1 | 1 | 1 | | 1 | 2 | 1 | | | | 12 | |
| | | 45.0 m (147'8") | 1 | 1 | 1 | | 1 | 1 | 2 | | | | 12 | |
| | | 48.0 m (157'6") | 1 | 1 | 1 | | 1 | 1 | 1 | 1 | | | 11 | |
| | 30.0 m (98'5") | 51.0 m (167'4") | 1 | 1 | 1 | | 1 | 2 | 1 | 1 | | | | 10 |
| | | 54.0 m (177'2") | 1 | 1 | 1 | | 1 | 1 | 2 | 1 | | | | 10 |
| | | 57.0 m (187'0") | 1 | 1 | 1 | | 1 | 1 | 1 | 2 | | | | 9 |
| | | 60.0 m (196'10") | 1 | 1 | 1 | | 1 | 1 | 1 | 1 | 1 | | | 8 |
| | | | | | | | | | | | | | | |
| Light-duty service | 24.0 m (78'9") | 39.0 m (127'11") | 1 | 1 | | 1 | 1 | | 1 | | | 100 000 kg (220 400 lb) capacity hook | 8 | |
| | | 42.0 m (137'10") | 1 | 1 | | 1 | 1 | 1 | 1 | | | | 8 | |
| | | 45.0 m (147'8") | 1 | 1 | | 1 | 1 | 2 | 1 | | | | | 8 |
| | | 48.0 m (157'6") | 1 | 1 | | 1 | 1 | 1 | 2 | | | | | 8 |
| | 30.0 m (98'5") | 51.0 m (167'4") | 1 | 1 | | 1 | 1 | 1 | 1 | 1 | | | | 8 |
| | | 54.0 m (177'2") | 1 | 1 | | 1 | 1 | 2 | 1 | 1 | | | | 8 |
| | | 57.0 m (187'0") | 1 | 1 | | 1 | 1 | 1 | 2 | 1 | | | | 8 |
| | | 60.0 m (196'10") | 1 | 1 | | 1 | 1 | 1 | 1 | 2 | | | | 8 |
| | 39.0 m (127'11") | 63.0 m (206'8") | 1 | 1 | | 1 | 1 | 1 | 1 | 1 | 1 | | 1 | 8 |
| | | 66.0 m (216'6") | 1 | 1 | | 1 | 1 | 2 | 1 | 1 | 1 | | | 8 |
| | | 69.0 m (226'5") | 1 | 1 | | 1 | 1 | 1 | 2 | 1 | 1 | | | 7 |
| | | 72.0 m (236'3") | 1 | 1 | | 1 | 1 | 1 | 1 | 2 | 1 | | | 7 |
| | | 75.0 m (246'1") | 1 | 1 | | 1 | 1 | 1 | 1 | 1 | 2 | | | 7 |
| | | 78.0 m (255'11") | 1 | 1 | | 1 | 1 | 2 | 1 | 1 | 2 | | | 6 |
| | | 81.0 m (265'9") | 1 | 1 | | 1 | 1 | 1 | 2 | 1 | 2 | | | 6 |
| | | 84.0 m (275'7") | 1 | 1 | | 1 | 1 | 1 | 1 | 2 | 2 | | | 5 |
| | | 87.0 m (285'5") | 1 | 1 | | 1 | 1 | 1 | 1 | 1 | 3 | | | 5 |
| | | 90.0 m (295'3") | 1 | 1 | | 1 | 1 | 2 | 1 | 1 | 3 | | | 5 |
| | | 93.0 m (305'1") | 1 | 1 | | 1 | 1 | 1 | 2 | 1 | 3 | | | 5 |
| | | 96.0 m (315'0") | 1 | 1 | | 1 | 1 | 1 | 1 | 2 | 3 | | | 4 |
| 99.0 m (324'10") | 1 | 1 | | 1 | 1 | 1 | 1 | 1 | 4 | | 4 | | | |

Mast (CB) Construction

| Mast (CB) length | Lower mast (CB) 10.5 m (34'5") | Upper mast (CB) 10.5 m (34'5") | Mast (CB) insert 3.0 m (9'10") | Mast (CB) insert 6.0 m (19'8") | Mast (CB) insert 9.0 m (29'6") |
|------------------|-----------------------------------|-----------------------------------|-----------------------------------|-----------------------------------|-----------------------------------|
| 24.0 m (78'9") | 1 | 1 | 1 | | |
| 30.0 m (98'5") | 1 | 1 | 1 | 1 | |
| 39.0 m (127'11") | 1 | 1 | 1 | 1 | 1 |

Power Transmission Mechanism and Hydraulic System

- 1 Variable displacement pump
- 2 Fixed displacement pump
- 3 2-speed variable displacement motor
- 4 Fixed displacement motor
- 5 Counterbalance valve
- 6 Brake valve
- 7 Control valve
- 8 Filter
- 9 Check valve
- 10 Hydraulic tank
- 11 Oil cooler
- 12 Engine
- 13 Main hoist drum
- 14 Boom (Auxiliary) hoist drum
- 15 Mast (CB) hoist drum
- 16 Center joint
- 17 Swing mechanism
- 18 Swing circle
- 19 Travel mechanism
- 20 Drive tumbler
- 21 Third drum (for tower use) (Optional)
- 22 Operator's cab
- 23 Raising/lowering hydraulic cylinder for tail weight
- 24 Valve



Specifications

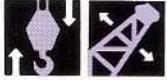


SUPERSTRUCTURE



Engine

| | |
|--|---|
| Model | ISUZU 12PB1 |
| Type | Water-cooled, 4-cycle, V-type 12-cylinder, direct fuel injection type diesel engine |
| Rated horsepower (DIN 6 270, Net) | 199 kW (270 PS) at 2 000 min ⁻¹ (2 000 rpm) |
| Maximum torque | 1 020 N·m (104 kgf·m, 752 lbf·ft) at 1 400 min ⁻¹ (1 400 rpm) |
| Piston displacement | 16.8 l (1 030 cu in) |
| Fuel tank capacity | 400 l (88.0 Imp. gal, 106 U.S. gal) |
| Electric system | 24 V AC generating |



Main and Boom (Auxiliary) Hoist Mechanism

Completely independent operation. Both main and boom (auxiliary) hoist drums are independently driven by high-torque variable piston motor through reduction gear. Load hoisting/lowering are done by normal/reverse rotation of motor. Smooth precise power lowering is made possible by the hydraulic brake. Main and auxiliary hoist levers give a choice of three speeds for hoisting/lowering. The low and high hoisting/lowering speeds are proportioned to the lever stroke; extra high speed is controlled by pushbutton switch with hoist lever, thus allowing easy matching to job conditions. Boom hoist lever gives a choice of two speeds for hoisting/lowering. High speed is controlled by pushbutton switch with hoist lever, thus allowing easy matching to job conditions.

Clutches Clutches are of the external contracting friction band type; main and auxiliary clutches are alike in size and type. Also, the clutches are of a spring-set/hydraulic-released type so that they do not disengage when engine stops.

Brakes External contracting friction band-type mechanical brakes, integrated with link lever, operate under normal load. For a larger load, a spring-type boost device is provided to ensure fatigue-free operation. Mechanical brake locks are equipped as standard. Furthermore, while in neutral position, the hoist lever is doubly secured in position by a hydraulic brake and an automatic brake. Boom hoist brake is automatically actuated when control lever is at neutral.

Drums Main and boom (auxiliary) hoist drums are of special alloy cast iron. Both hoist drums are mounted on the lifetime-lubricated anti-friction ball bearings. The front drum is for main hoisting and the rear drum for boom (auxiliary) hoisting. Drum pawl locks are provided for integral lock of drums. They are controllable from the operator's seat. They are driven by a hydraulic cylinder and controllable from the operator's seat. Furthermore, when the engine is turned off to temporarily stop work, these locks catch automatically for safety purposes.



Mast (CB) Hoist Mechanism

Completely independent operation. A drive shaft with splined twin drum is driven by high-torque piston motors through reduction gear. Hoisting/lowering are done by normal/reverse driving of the motor. Smooth, precise mast lowering is made possible by power lowering through the hydraulic brake. Both hydraulic brake and automatic brake offer positive and safe stopping of mast.

Mast (CB) Drum Brakes Spring set/hydraulic-released multiplate disc type. Brake is automatically actuated when control lever is at neutral position.

Drum Locks Drum pawl locks are driven by the hydraulic cylinder and controlled from the operator's seat. Furthermore, when the engine is turned off to temporarily stop work, these locks catch automatically for safety purposes.



Swing Mechanism

Completely independent operation. Driven by 2-high-torque piston motors through reduction gear. When used with counterbalancing crane specifications, two motors are used for swing. When using with ordinary crane specifications, the swing force is provided by one motor. Swing speeds are freely controllable within the 0 to maximum speed with single lever stroking.

Swing Parking Brake Friction-plate type brake is actuated by operating either the swing parking brake lever located at the right side of operator's seat or the switch on the swing lever.

Swing Lock Manually operated mechanical lock with a rod tip which is engaged in recess of undercartridge during transportation and when not working.

Swing Circle Three roller types are mounted on anti-friction bearing with heat-treated internal gear.



Revolving Frame

All steel welded construction, stress-relieved, precision-machined unit, especially designed for rigidity and strength.

Gantry Lowerable for transportation. Especially designed for rigidity and strength. Speedy, easy raising/lowering are possible with optional hydraulic cylinders.

Counterweight 7-piece, readily removable for weight reduction of machine for transportation.

Total weight 60 000 kg (132 000 lb)
 1 x 18 230 kg (40 200 lb)
 3 x 6 960 kg (15 300 lb)
 3 x 6 960 kg (15 300 lb)

Tail weight (with carrier)

Total weight
 •Series 1
 70 000 kg (154 300 lb)
 •Series 2
 76 000 kg (167 600 lb)
 Tires 14:00-24-20PR (Double x 4)



Front-end Attachments

Tubular Chord Boom Lattice construction, high tensile strength steel tubular chord.

Series 1

- Basic boom 6-pieces, total length 36.0 m (118'11"); upper section 7.5 m (24'7"), lower section 7.5 m (24'7"), 3.0 m (9'10") x 2, 6.0 m (19'8") and 9.0 m (29'6") boom insert.
 Maximum rated load . . . 130 000 kg (286 600 lb).
- Boom point Offset boom point, 9 sheaves mounted on anti-friction bearings on boom point.
- Sheave P.C.D. 560 mm (22.0")
- Basic boom 6-pieces, total length 39.0 m (127'11"); upper section 10.5 m (34'5"), lower section 7.5 m (24'7"), 3.0 m (9'10") x 2, 6.0 m (19'8") and 9.0 m (29'6") boom insert.
 Maximum rated load . . . 100 000 kg (220 400 lb).
- Boom point Offset boom point, 5 sheaves mounted on anti-friction bearings on boom point.
- Sheave P.C.D. 560 mm (22.0")
- Boom insert 3.0 m (9'10"), 6.0 m (19'8"), 9.0 m (29'6") and 12.0 m (39'4") (Light-duty service only) long 2 100 mm (82.7") wide by 2 100 mm (82.7") deep at connection.

- Connection type Pin-connected.
- Boom backstop Dual-rail, tubular construction
- Boom hoist bridle Equipped with 4 sheaves [450 mm (17.7") P.C.D.].
- Basic mast (CB) 3-pieces, total length 24.0 m (78'9"); upper section 10.5 m (34'5"), lower section 10.5 m (34'5"), 3.0 m (9'10") mast (CB) insert.
- Mast (CB) hoist bridle Equipped with 9 sheaves [360 mm (14.2") P.C.D.].
- Mast (CB) insert 6.0 m (19'8") and 9.0 m (29'6") long 2 100 mm (82.7") wide by 2 100 mm (82.7") deep at connection.
- Jib, Auxiliary Jib not available
 and Intermediate
 boom suspension rope

Series 2

- Basic boom 5-pieces, total length 36.0 m (118'11"); (Heavy-duty service) upper section 7.5 m (24'7"), taper upper boom insert 7.5 m (24'7"), lower section 7.5 m (24'7"), taper lower boom insert 7.5 m (24'7") and 6.0 m (19'8") boom insert.
 Maximum rated load . . . 180 000 kg (396 800 lb).
- Boom point Offset boom point, 9 sheaves mounted on anti-friction bearings on boom point.
- Sheave P.C.D. 560 mm (22.0")
- Basic boom 5-pieces, total length 39.0 m (127'11"); (Light-duty service) upper section 10.5 m (34'5"), taper upper boom insert 7.5 m (24'7"), lower section 7.5 m (24'7"), taper lower boom insert 7.5 m (24'7") and 6.0 m (19'8") boom insert.
 Maximum rated load . . . 100 000 kg (220 400 lb).
- Boom point Offset boom point, 5 sheaves mounted on anti-friction bearings on boom point.
- Sheave P.C.D. 560 mm (22.0")
- Boom insert Taper upper 7.5 m (24'7"), taper lower 7.5 m (24'7"), 3.0 m (9'10"), 6.0 m (19'8"), 9.0 m (29'6") and 12.0 m (39'4") long.
 2 600 mm (102.4") wide by, 2 100 mm (82.7") deep at connection.
- Connection type Pin connected.
- Boom backstop Dual-rail, tubular construction
- Boom hoist bridle Equipped with 4 sheaves [450 mm (17.7") P.C.D.].
- Basic mast (CB) 3-pieces, total length 24.0 m (78'9"); upper section 10.5 m (34'5"), lower section 10.5 m (34'5"), 3.0 m (9'10") mast (CB) insert.
- Mast (CB) hoist bridle Equipped with 9 sheaves [360 mm (14.2") P.C.D.].

Mast (CB) insert 6.0 m (19'8") and 9.0 m (29'6") long
2 100 mm (82.7") wide by 2 100 mm
(82.7") deep at connection.

Jib, Auxiliary Jib . . . not available.
and Intermediate
boom suspension rope



Operator's Cab

All-weather, well-ventilated, all-round visibility, roomy operator's cab. The completely independent cab is insulated against noise and vibration. Sliding, fold-in front window swings up and stores in roof. Fully adjustable reclining seat — fore and aft/up and down.



UNDERCARRIAGE

Travel Mechanism Each track is directly driven by a high-torque piston motor through reduction gear without any clutches or drive chains. This mechanism allows counter-rotation of tracks for maximum maneuverability in close quarters. When travel lever is returned to neutral position, both hydraulic brake and spring-set/hydraulic-released multi-plate disc brake are automatically actuated to effect reliable stopping.

Track Frame All-welded robust rolled steel, stress-relieved, box-section construction.

Side Frames All-welded robust rolled steel, stress-relieved, box-section construction.

Retractable Side Frame

Side Frame Removal Cylinder (Optional) Both right and left side frames can be speedily removed by side frame removal cylinder. And self-loading device allows the machine to load its basic machine onto a trailer through the use of its own hydraulic jack cylinders. Travel motor pipings are connected via self-seal couplings for quick disconnection.

Rollers and Tumblers All rollers and tumblers are sealed with floating seals, requiring no lubricating until overhaul. All shafts are made of alloy steel and induction hardened for maximum wear resistance.

Track Shoes Heat-treated alloy steel cast with induction-hardened roller path and driving lug. Shoes are connected by induction-hardened steel pins:
Shoe width 1 270 mm (50")

Track Tension Adjuster Track tension is adjusted by hydraulic jack at the front idler bearing block and by inserting proper shims.



HYDRAULIC SYSTEM

Three variable displacement piston pumps + 3-gear pump hydraulic system allows both independent and combined operations of all functions. Variable-displacement piston pumps not only adequately control operating speeds, but also utilize engine horsepower to maximum.

| | Pump-1 | Pump-2 |
|------------------|---|---|
| Type of pump | Variable displacement pump | |
| Pressure setting | 280 bar (280 kgf/cm ² , 3 980 psi) | |
| Oil flow | 240 l/min (52.7 Imp. gpm, 63.3 U.S. gpm) | |
| Use | <ul style="list-style-type: none"> • Travel (right) • Main hoist (high) • Boom (Aux.) hoist (low) • Mast (CB) hoist | <ul style="list-style-type: none"> • Travel (left) • Main hoist (low) • Boom (Aux.) hoist (high) • Third drum |

| | Pump-3 | Pumps-4, 5 and 6 |
|------------------|---|--|
| Type of pump | Variable displacement pump | Gear pumps |
| Pressure setting | 280 bar (280 kgf/cm ² , 3 980 psi) | <ul style="list-style-type: none"> *1 5 bar (5 kgf/cm², 71.1 psi) *2 175 bar (175 kgf/cm², 2 490 psi) *3 40/175 bar (40/175 kgf/cm², 569/2 490 psi) |
| Oil flow | 210 l/min (46.2 Imp. gpm., 55.5 U.S. gpm) | <ul style="list-style-type: none"> *1 155 l/min (34.1 Imp. gpm, 41.0 U.S. gpm) *2 116 l/min (25.5 Imp. gpm, 30.6 U.S. gpm) *3 52.7 l/min (11.6 Imp. gpm, 13.9 U.S. gpm) |
| Use | <ul style="list-style-type: none"> • Swing | <ul style="list-style-type: none"> *1 Supply the Hyd. oil to suction line *2 For tail weight cylinder operation *3 Remote-controlled hydraulic servo system • Optional gantry, jackup and side-frame removing devices. |

Main Hoist Motor Axial variable piston motor with counterbalance valve and a control valve to change motor capacities.

Boom (Auxiliary) Hoist Motor Axial piston motor with counterbalance valve and a control valve to change motor capacities.

Mast (CB) Hoist Motor Radial piston motors with counterbalance valve.

Swing Motor High-torque axial piston motor.

Travel Motor Axial piston motor with brake valve and spring-set/hydraulic-released multiplate disc brake.

Relief and Brake Valves Each hydraulic circuit incorporates large-capacity relief valves to protect circuit from overload or shock load. Counterbalance valves (compensates safe, positive load lowering and prevents accidental load drop when hydraulic power is suddenly reduced) are provided for hoist motor. Brake valves (consisting of relief valve and counterbalance valve) are provided for travel circuit.

Filter Elements High-filtration 10 μ full-flow filter element is provided to keep hydraulic oil clean and to ensure long-term, trouble-free operation. Pilot filter and suction filter are provided in each circuit.



CONTROLS

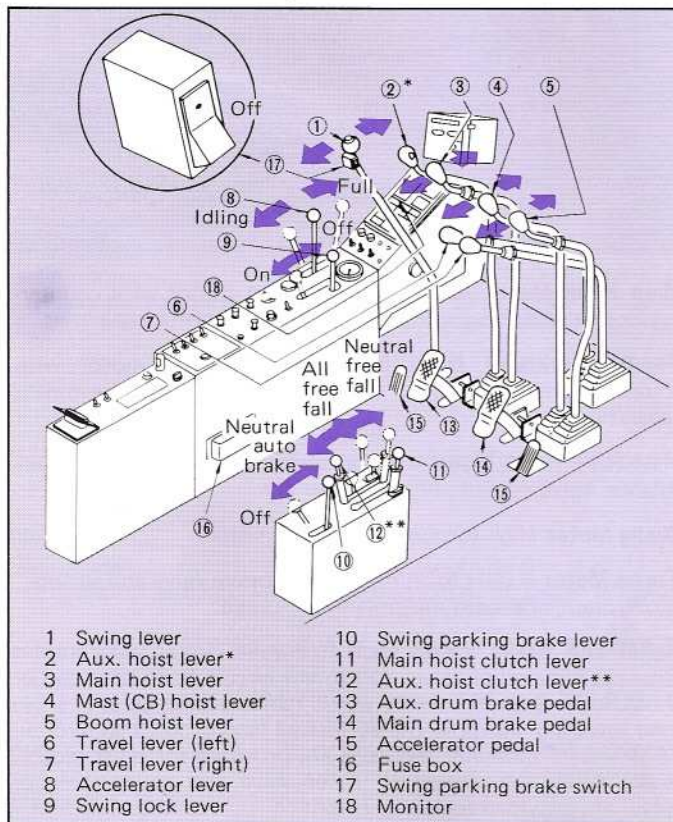
Mast (CB) , Main and Boom (Auxiliary) Hoist and Travel

Remote controlled hydraulic servo. Working speed can be precisely controlled by changing lever stroke.

Main/Auxiliary Hoist Clutch Lever Located on the right side of operator's seat. This lever allows selection of either; a) during crane operation, brake works automatically when the hoist lever is in neutral position; or b) during bucket operation, freefall is possible when the hoist lever is in neutral position. Of course, even during crane operation, it is possible to allow freefall when the hoist lever is in neutral position. It thus permits the operator to select brakes according to the job type, for easy, safe operation.

Swing Mechanical linkage type, featuring smooth, precise swing.

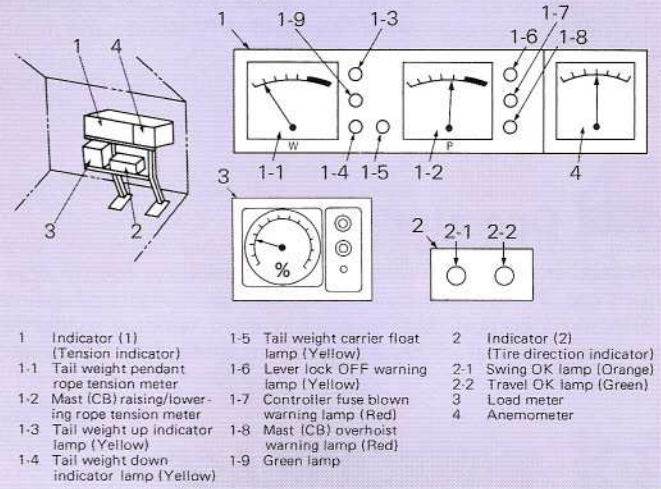
Accelerator Foot throttles (at both right and left pedals) and hand throttle controls are provided as standard.



- | | |
|-------------------------|-------------------------------|
| 1 Swing lever | 10 Swing parking brake lever |
| 2 Aux. hoist lever* | 11 Main hoist clutch lever |
| 3 Main hoist lever | 12 Aux. hoist clutch lever** |
| 4 Mast (CB) hoist lever | 13 Aux. drum brake pedal |
| 5 Boom hoist lever | 14 Main drum brake pedal |
| 6 Travel lever (left) | 15 Accelerator pedal |
| 7 Travel lever (right) | 16 Fuse box |
| 8 Accelerator lever | 17 Swing parking brake switch |
| 9 Swing lock lever | 18 Monitor |

Notes: The single asterisk * means that this should not be used when counterbalancing type front-end attachment specifications apply. The double asterisk ** means that the KH1000 counterbalancing type crane uses an auxiliary hoist drum for raising/lowering the boom. The auxiliary hoist clutch must be in the engaged (in the neutral auto brake position) to apply the lever locking mechanism.

Indicator (Front Stand)



SAFETY DEVICES

Boom Angle Indicator Mechanical type boom angle indicator is provided at boom foot.

Counterbalance Valve (Brake Valve) A counterbalance valve is incorporated in travel motors, mast (CB) hoist motor, main and boom (auxiliary) hoist motor, respectively. In case the hydraulic line is broken, this valve is automatically actuated to prevent accidents.

Spring-set/Hydraulic-released Multiplate Disc Type Travel Brakes

Swing Lock

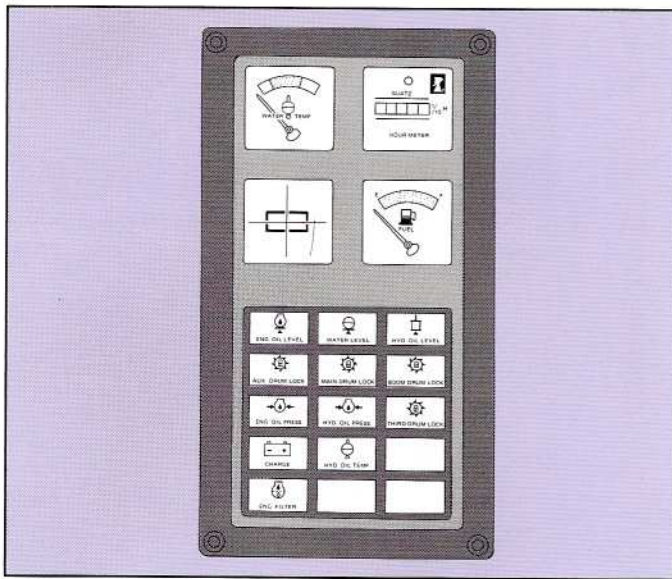
Swing Parking Brake Can be actuated conveniently by either a switch mounted on a swing lever or a lever provided on the right side of operator's seat. It is a maintenance-free, friction plate type brake, of a spring-set hydraulically release type which brakes automatically for safety when the engine stops.

Drum Lock A pawl type drum lock is adopted for main drum, boom (auxiliary) drum and mast (CB) drum.

For lift crane

- **Electric Load Indicator** This indicator is an electrically operated type that reads the weight of a suspended load. The load pick-up device is installed on the upper boom.
- **Hook Overhoist Prevention Device** When the hook reaches its safety hoist limit, an alarm bell rings and an auto stop device automatically stops at the same time.
- **Boom Overhoist Prevention Device** When the boom reaches its safety angle limit, a buzzer alarm sounds and boom hoisting automatically stops at the same time. Boom back-stop is also installed.

Inspection Monitors Allow the operator to check each function before work is started. If any abnormalities are detected in the engine or control system during work, a lamp lights up and a buzzer sounds to warn the operator. A fuel gauge and an engine coolant temperature gauge are also provided.



OPTIONAL EQUIPMENT

Operator's Cab Electric fan, car radio, cab cooler

Hydraulic Gantry Cylinders

Side Frame Removal Device

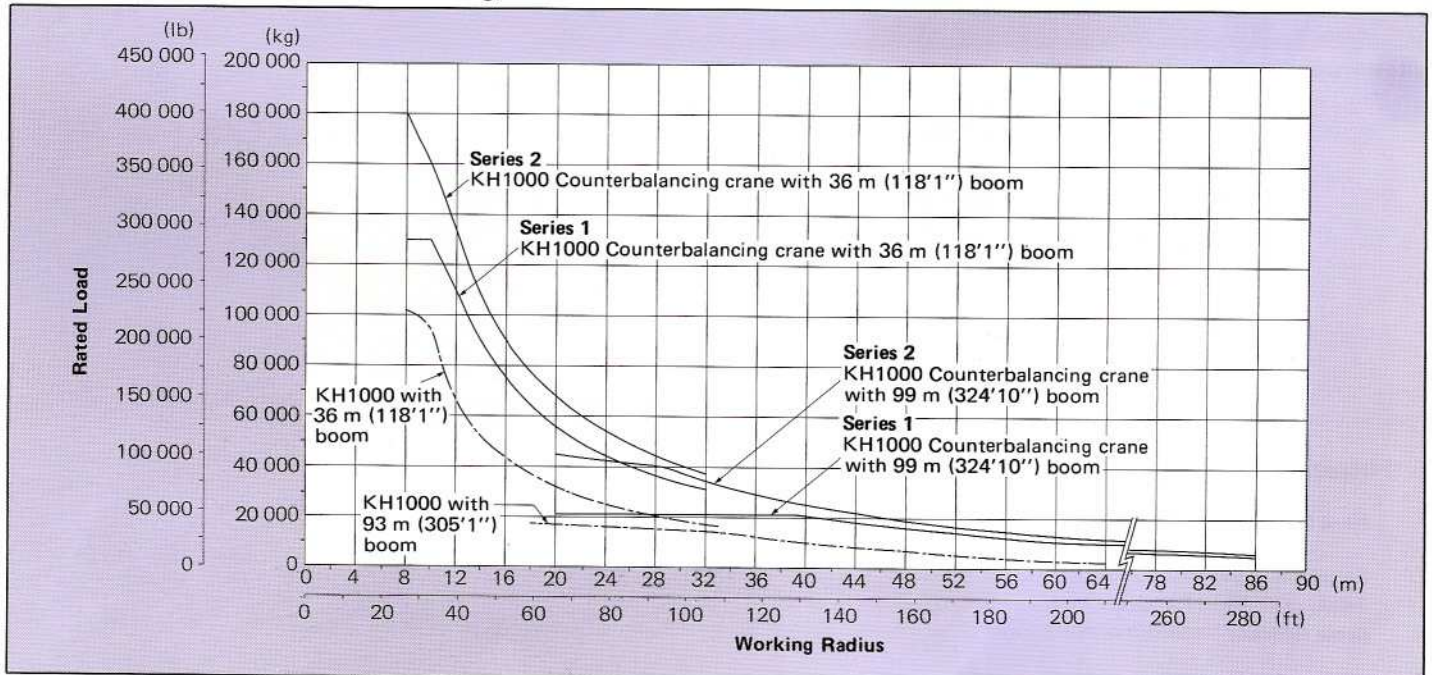
Side-frame Extension/Retraction Beams and Jacks

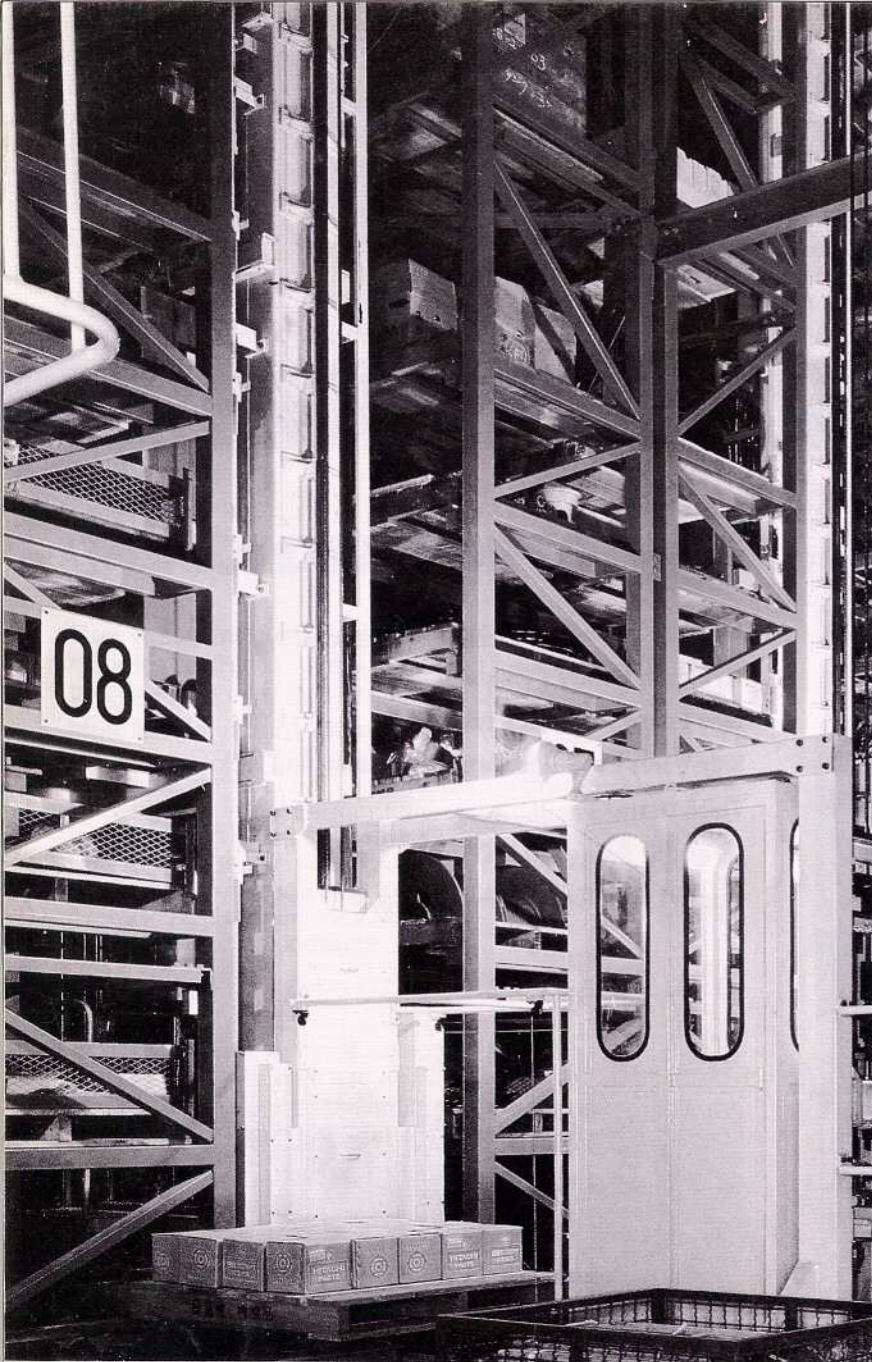
Third Drum

Hydraulic Swing Circle Clamping Device

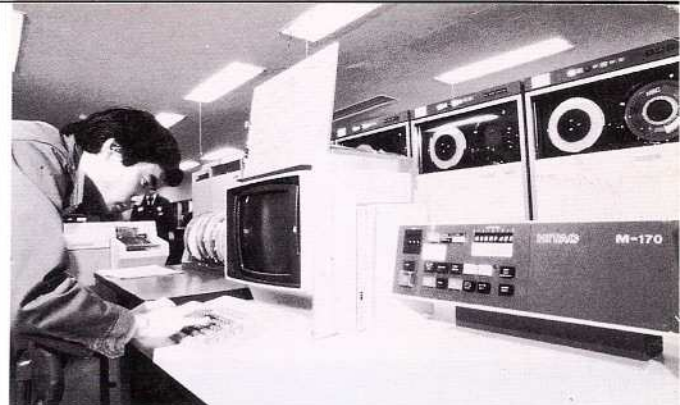
Upper/Lower Knock-down Outrigger

Crane Rated Load Curve (PCSA Rating)





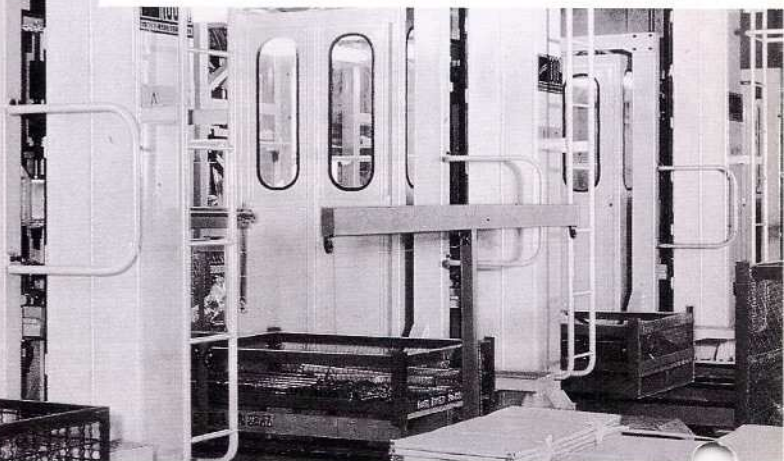
Multi-story automatic warehouse



Local on-site data gathering provides essential feedback for computer analysis.



Computerized parts supply . . . video data terminal.



Better After-Sales Service Assures Higher Availability.

Hitachi Construction Machinery Co., Ltd.

Head Office: Nippon Bldg., No. 6-2, 2-chome, Ohtemachi,
Chiyoda-ku, Tokyo 100, Japan

Telephone: Tokyo (03) 245-6380, 6381

Telex: J32539 HITACONJ

Cable Address: "TOKHITACHIKENKI"

These specifications are subject to change without notice.